



ITE Coordinating Council

A Community of Professionals
with Common Interests



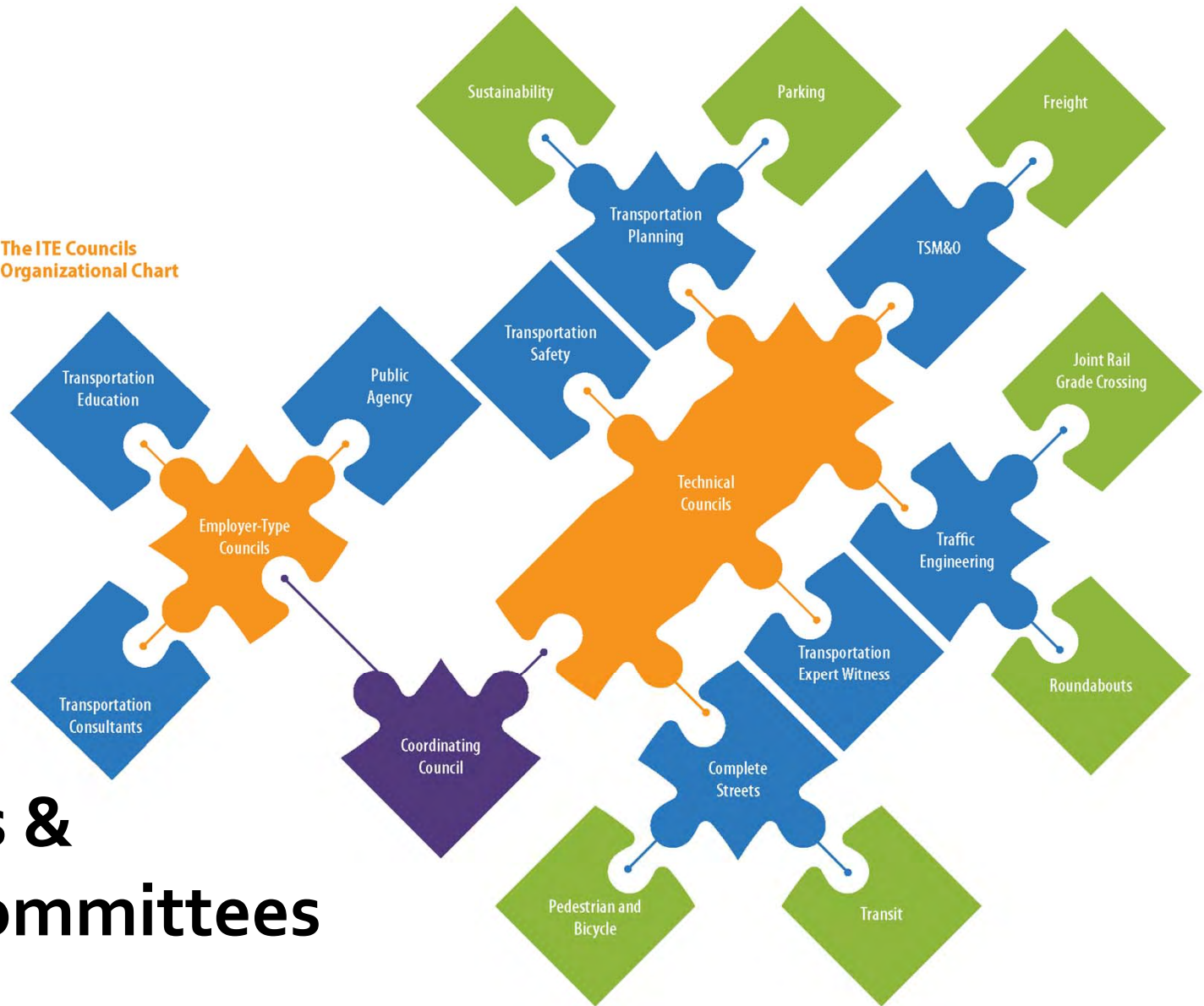
ITE Coordinating Council



- **Mission**
 - Enhance professional collaboration and advance technical body of knowledge
- **Goals**
 - Provide communities of common interest
 - Serve as link between communities and other elements of ITE
 - Focal point for activities, creation of products, and professional development
 - Participation open to all members of ITE



The ITE Councils
Organizational Chart



ITE Councils & Standing Committees



ITE Councils



Roles and Responsibilities

- Be on the leading edge of issues
- Provide volunteer opportunities
- Develop technical products
- Actively contribute to the body of knowledge of the discipline
- Apply the ITE core values





Some recent products ...



- **Protected Bikeways Practitioner's Guide** – Complete Streets Council
- **Recommended Design Guidelines to Accommodate Pedestrians and Bicycles at Interchanges: An ITE Recommended Practice** – Complete Streets Council
- **Transportation Safety 101 webinar series** – Transportation Safety Council
- **The Trial of a Century** at the 2017 Toronto Annual Meeting – Transportation Forensics and Risk Management Council
- **Smart Communities Initiatives** - Transportation Systems Management & Operations
- **Survey of Guidelines Used to Select Sidewalk Locations** - Traffic Engineering Council



Institute of Transportation Engineers

A Community of Transportation Professionals
Your source for expertise, knowledge and ideas

Equity and ITE

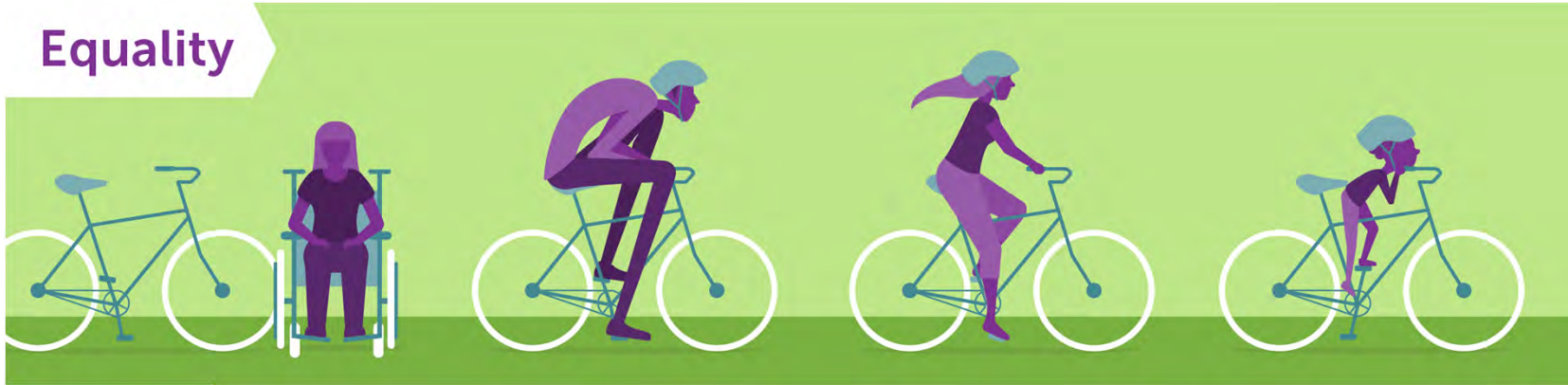
Equity	VS	Equality
“the quality of being fair and impartial”		“the state of being equal”

Equity is concerned with the **fair and impartial allocation of resources based on the needs of the population**, not just the equal sharing of resources across the population.



Providing opportunities based on need

Equality



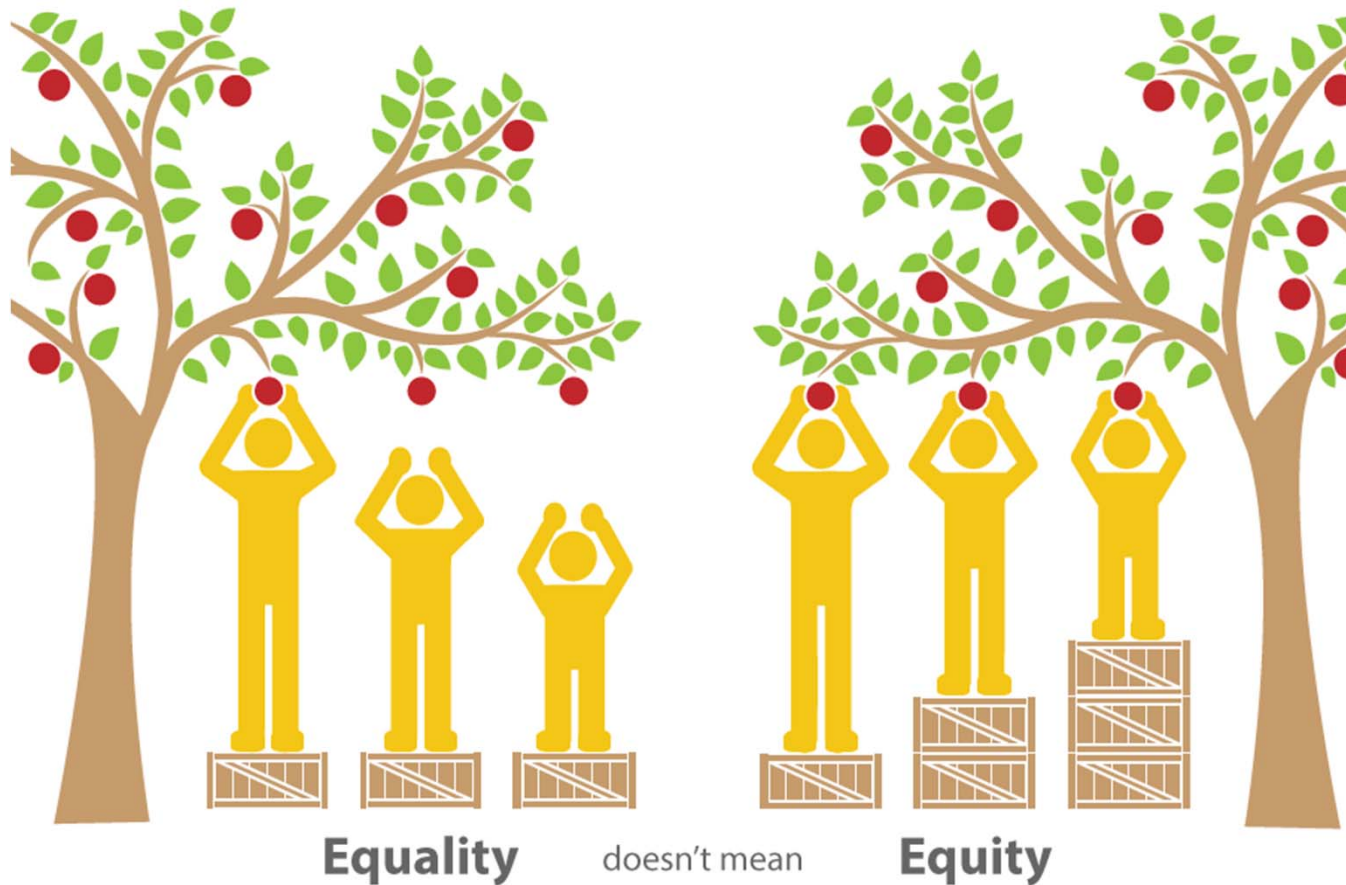
Equity



© 2017 Robert Wood Johnson Foundation.
May be reproduced with attribution.



Ensuring access to healthy environments for all



Equality

doesn't mean

Equity



Distributing resources according to what is needed to prosper





Acknowledging systemic barriers that may be holding groups and individuals back

EQUALITY VERSUS EQUITY



In the first image, it is assumed that everyone will benefit from the same supports. They are being treated equally.



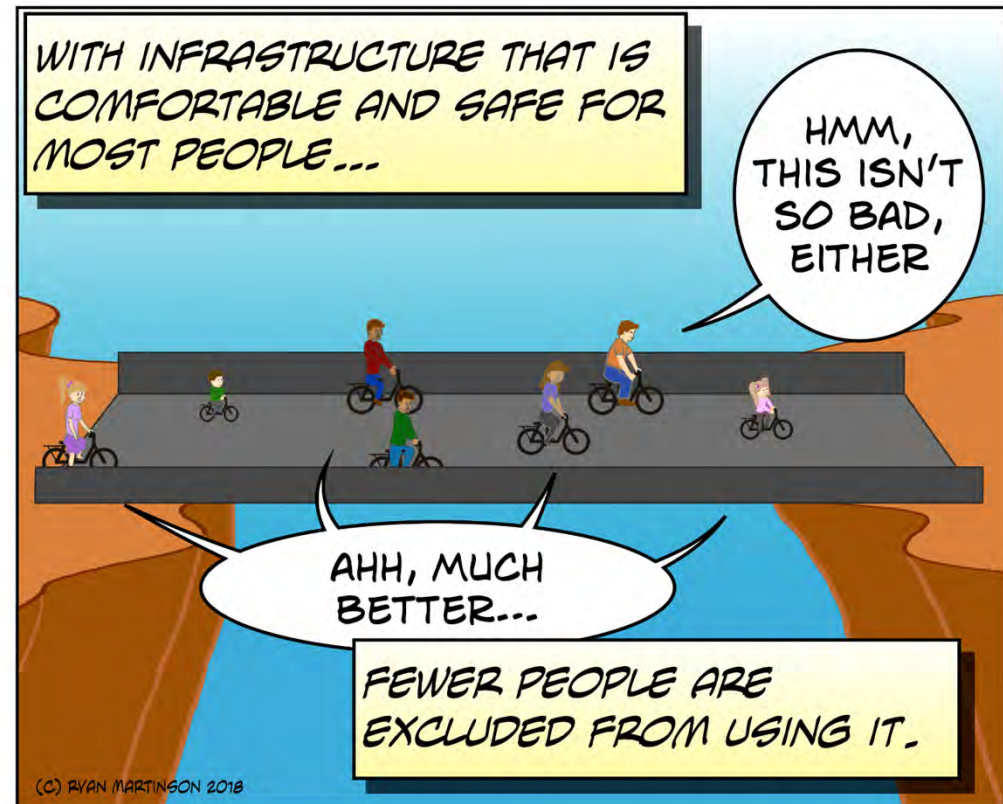
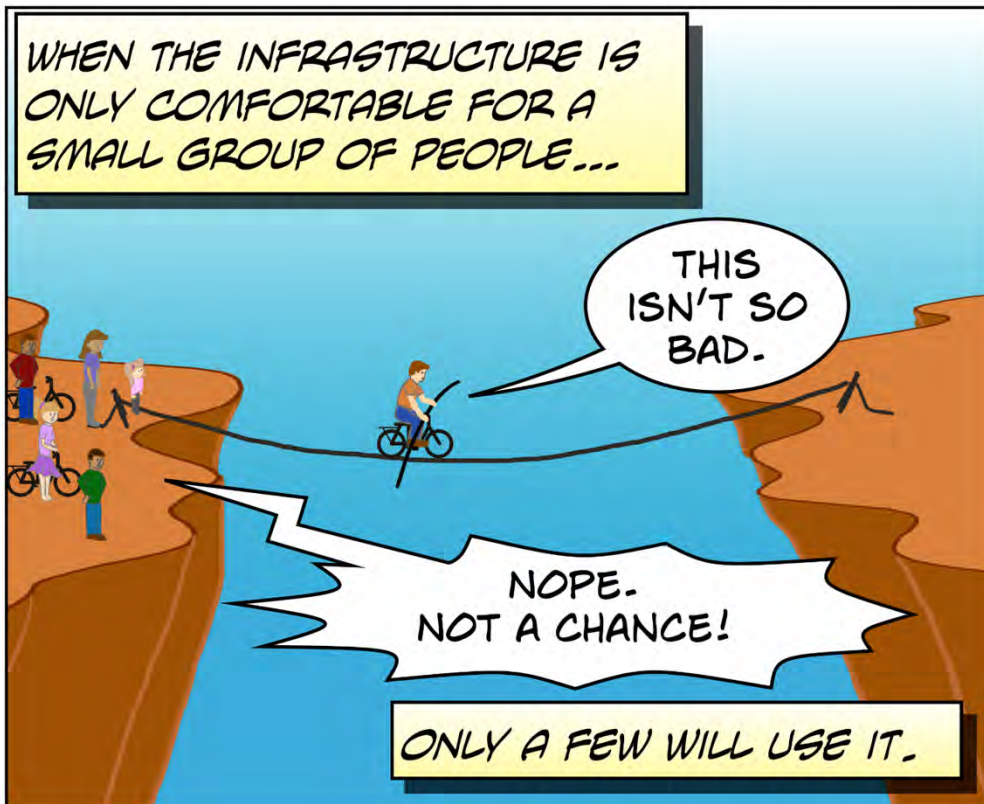
In the second image, individuals are given different supports to make it possible for them to have equal access to the game. They are being treated equitably.



In the third image, all three can see the game without any supports or accommodations because the cause of the inequity was addressed. The systemic barrier has been removed.



The design of infrastructure also influences who will feel comfortable enough to use the transportation system





Examples of actions to improve equity outcomes



Individual	Profession
<ul style="list-style-type: none">• Empathy exercises (spend a day in a wheelchair, experience sight loss or hearing loss through sensitivity training)• Understand and implement best practice design that is based on current research and design thinking	<ul style="list-style-type: none">• Continue to adopt design practices that have been proven to increase the comfort and safety of the design user.• Take action to remove systemic barriers that may exist which limit certain groups of people from participating in the profession
Agency	Public
<ul style="list-style-type: none">• Plan and prioritize infrastructure and policies that are sensitive to disparities between various populations and the needs that may differ across the area• Design and construct infrastructure that will be comfortable and safe for the entire population• Be cognizant of the diversity within the agency and disparities that may exist in the ranks of the designers and the decision-makers	<ul style="list-style-type: none">• Demand we have equity as one of the pillars for how we plan, prioritize, design, and build the places we live, work, play, learn, and travel through.• Demand we have a human-centered design approach• Demand to be involved in the planning and design process. Every voice is important to be heard and considered by the people making decisions about priorities and designs



Discussion



Does the issue of Equity resonate as an important issue for ITE members?

What actions could ITE take to take advance equity outcomes at various levels?

