

2025 Mid-Colonial District Annual Meeting

The Importance of Engaging Traffic Engineering and Planning Professionals in Advancing TIM

Alvin Marquess – Jacobs Engineering

1

1

What Is Traffic Incident Management?

- Traffic Incident Management (TIM) consists of a **planned** and **coordinated** multi-disciplinary process to detect, respond to, and clear traffic incidents so that traffic flow may be restored as safely and quickly as possible.
- Effective TIM reduces the duration and impacts of traffic incidents; improves the safety of motorists, crash victims, and emergency responders; and reduces the frequency of secondary crashes.

2

2

Should contractors be involved in incident management?

- Typically, the contractor is already on scene
- Some contractor personnel have experience as fire/EMS volunteers
- Contractor assets such as traffic control drums and lifting equipment might be useful for incident response
- Can be key assets in communicating with First Responders and helping to facilitate their response to the site.



3

3

TIM Training for Engineers, Planners and Contractors

Why is TIM Training Beneficial for Engineers, Planners and Contractors?

- Provides awareness of what should be considered in engineering and design of roadwork projects to meet the needs of responders
- Adds awareness of safety protocols which should be included in traffic management plans
- Includes good safety tips for those performing the construction of the projects
- Assists in developing all inclusive Traffic Management Plans

Training does not have to be the 4-hour FHWA training

4

4

Transportation Management Plans (TMPs)

Why Create Transportation Management Plans?

- To properly coordinate the operations of roadwork projects and ensure all partners are included for awareness of the impacts of the project

TMPs help agencies, contractors and first responders prepare for traffic issues unique to each site/project.

TMPs define how contractors can assist responses to incidents in the work zones

The TMP process has been successful in:

- Ensuring response agencies are aware of challenges in responding to incidents in the work zone
- Improving travel conditions
- Creating a better safety environment
- Reducing complaints from the public



5

5

Expect the Unexpected

Traffic crashes

Within work zones

Traffic queue leading to work zones

Worker illnesses and injuries

Construction-related mishaps, e.g.:

Equipment tip-over

Embankment or trench collapse

Fire at construction site



6

6

Pre-Construction Meetings

Everyone involved with the project discusses:

- Roles and Responsibilities
- Construction Details
- Procedures & Schedules
- Decisions that must be made
- Input on emergency response. needs from responders



Questions that have not been answered

7

7

TMP Successful Example I 95 Viaduct Rehabilitation Project Agencies Included in Developing Response Plans

Emergency Management:

- DEMA
- NCC EMA
- Wilmington EMA
- NCC 911

Law Enforcement:

- DSP
- DSP Aviation
- Wilmington PD
- New Castle Co. PD
- Elsmere PD
- Newport PD
- DE. Police Chiefs
- DRBA PD

Fire Depts.:

- DE State Fire Sch.
- NCC Firemen's Assoc.
- Wilmington Fire Department
- Aetna Hose
- Belvedere Fire
- Brandywine Hundred
- Christiana
- Claymont
- Five Points
- Mill Creek
- Minquadale
- Talleyville
- DE State Fire Police

Transportation:

- DelDOT (TMC, Bridge, Maintenance and Safety)
- Wilmington Transportation Dept.

Hospitals

- St. Francis Hospital
- Christiana Care Hospital
- Nemours/Al DuPont Hospital

EMS:

- New Castle County EMS
- Cecil County MD Emerg. Services

Neighboring States:

De Co., PA Emerg. Services

Utilities:

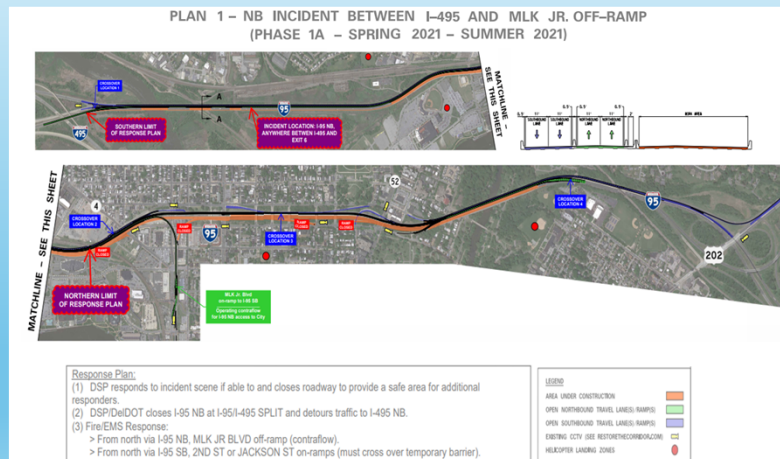
- DelMarVa Power
- Contractors:
- Whitman Requart
- Kiewit



8

8

Response Plan Books



9

9

Work Zones Challenges for Responders

Work Zone Traffic Incident Management (WZ-TIM) differs from TIM on ordinary roadways in several ways:

- Difficult access to work zone incidents
- Limited space: lane restrictions
- Traffic congestion: back-ups / queues
- Many organizations to coordinate:
 - First responders (police, fire, EMS, towing)
 - Agency traffic operations center
 - Contractor personnel
 - Agency construction management personnel



10

10

Planning for Accessing the WZ Incident Site

- Preplanned Potential Solution Examples
- Gates in temporary barriers
- Gated “back-door” access to work sites
- Temporary access from overpasses or side roads
- Emergency response vehicles suitable for off-road driving



11

11

Benefits Realized from TIM Considerations Integrated into Traffic Engineering and Planning

Integrating TIM into traffic planning and engineering creates a safer, more efficient, and more reliable transportation system for everyone. Not only during construction but once the project is completed.

12

12

Questions?



Thank You: Alvin Marquess
Jacobs Engineering
Alvin.marquess@jacobs.com

13