

Developing a Coordinated Safety Program for Suburban Regions: A Case Study of the NYMTC Area

Md. Sadman Islam
Graduate Research Assistant
Rowan University

Ruqaya Alfaris
Graduate Research Assistant
Rowan University

Mohammad Jalayer, Ph.D.
Associate Professor
Rowan University

2025 Mid-Colonial District ITE Annual Conference
April 24th, 2025

1

Abstract

This paper presents the development of a Coordinated Safety Program tailored for the suburban areas within the New York Metropolitan Transportation Council (NYMTC) region. The program addresses critical transportation safety challenges, fosters inter-jurisdictional collaboration, and aligns existing safety initiatives to create a cohesive regional strategy.

The study incorporates insights from extensive stakeholder engagement with the Mid-Hudson South and Nassau-Suffolk Transportation Coordinating Committees (TCCs), whose feedback revealed pressing safety concerns, including pedestrian and bicycle safety, speeding, congestion, and infrastructure resiliency. Key barriers to coordination, such as fragmented governance, funding limitations, and policy misalignments, were also identified.

Grounded in these findings, the proposed program establishes a comprehensive policy framework focusing on data integration and sharing, standardized enforcement practices, public outreach, federal collaboration, and the adoption of emerging technologies. Priority actions include expanding pedestrian and bicycle networks, implementing intersection safety enhancements, deploying smart traffic technologies, and strengthening inter-jurisdictional communication. Furthermore, the program emphasizes region-wide safety campaigns and joint enforcement operations to ensure consistent safety standards and public engagement.

This paper contributes to the discourse on regional transportation safety by demonstrating a scalable and adaptable model for coordinated safety programs. By leveraging collaboration and innovative practices, the proposed program aims to improve safety outcomes, enhance efficiency, and ensure equitable and sustainable transportation systems across suburban areas.

2

Outline

- Introduction
- Objectives
- Study Approach
- Recommended Safety Actions
- Policy Framework
- Implementation Actions
- Key Takeaways

3

Introduction

- Focus on suburban areas within the New York Metropolitan Transportation Council (NYMTC) planning area
- Increasing safety concerns
- Inconsistent safety strategies across jurisdictions
- Need for a unified, regionally coordinated safety approach
- Align efforts, enhance collaboration, and improve outcomes

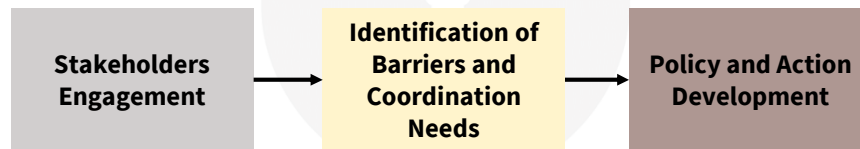
4

Objectives

- Identify critical transportation safety issues across NYMTC's suburban counties
- Understand inter-jurisdictional barriers to effective safety coordination
- Gather stakeholder input to inform safety needs and priorities
- Develop a coordinated safety program aligned with local and regional efforts
- Propose actionable policies and strategies to enhance transportation safety and collaboration

5

Study Approach



6

Stakeholder Engagement

- Transportation Coordinating Committees (TCCs) involved: Mid-Hudson South TCC & Nassau-Suffolk TCC
- Localized safety and coordination insights
- Structured outreach included:
 - Safety concerns and issues
 - Safety improvement interventions
 - Policies important in a coordinated safety plan
 - Existing safety programs
 - Potentials and barriers of coordination

7

Transportation Safety Concerns



**Pedestrian and
bicycle safety**



**Speeding &
congestion**



**Infrastructure
resiliency**

8

Barriers to Coordination



**Fragmented
governance**



**Funding
constraints**



**ROW and design
limitations**

9

Opportunities for Coordination



**Joint
infrastructure
planning**



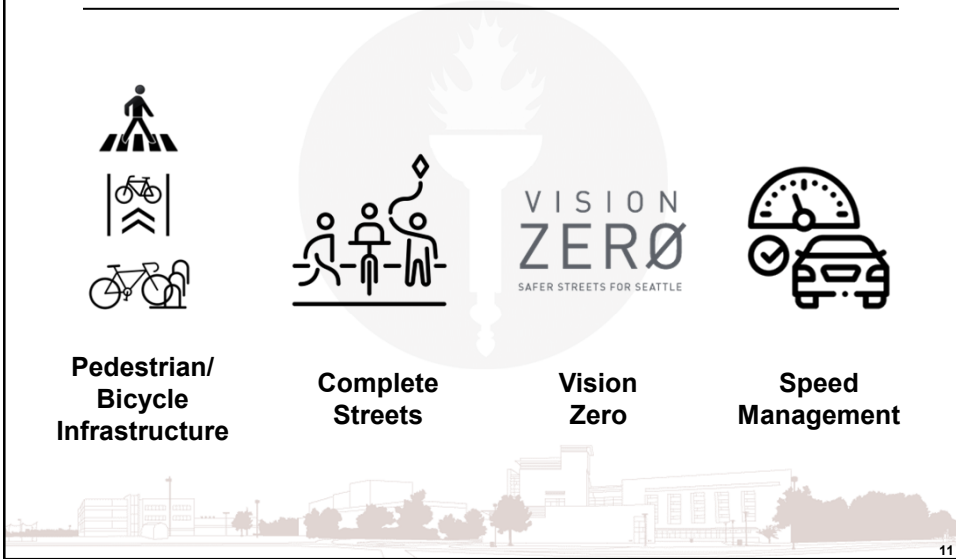
**Coordinated
data sharing**



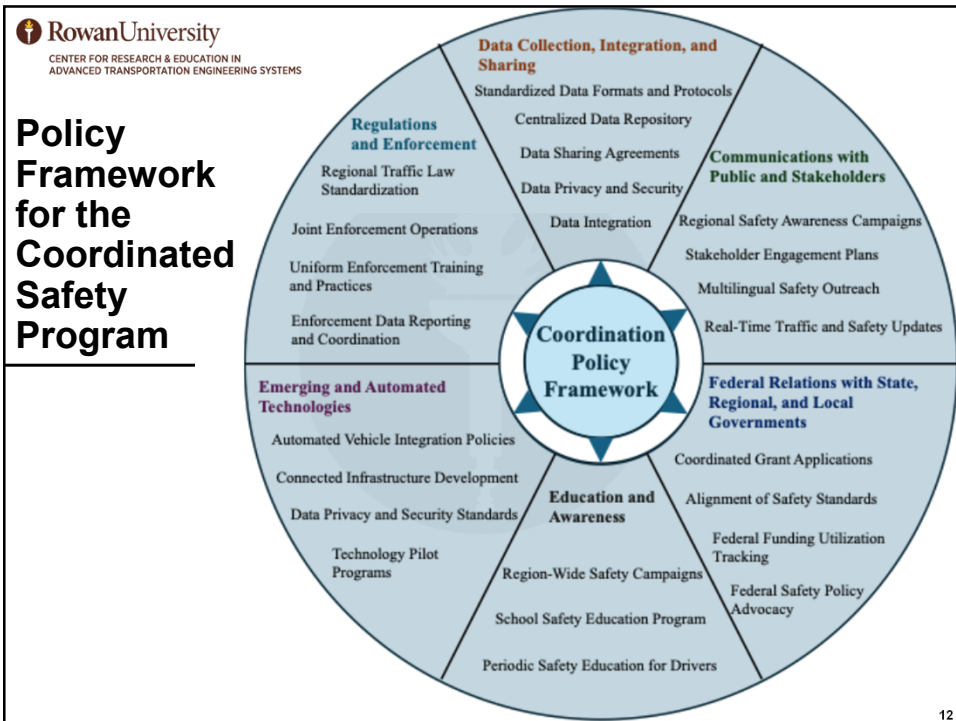
**Unified
enforcement and
education**

10

Policy and Action Priorities

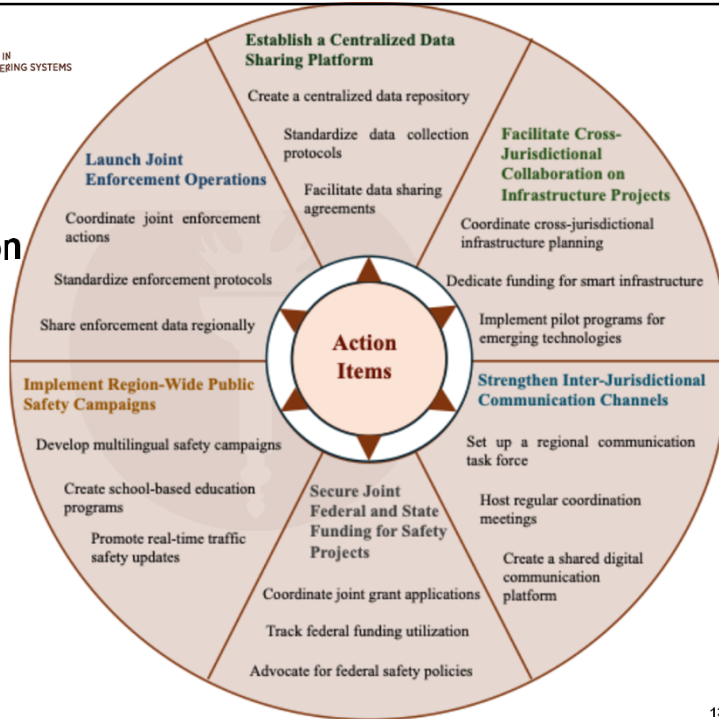


11



12

Actions to Strengthen Safety Collaboration

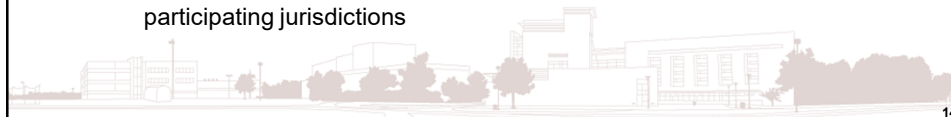


13

13

Key Takeaways and Conclusion

- The program is built on direct input from stakeholders so proposed solutions reflect real-world challenges and needs across suburban counties
- Combining policy frameworks with tangible action plans enables jurisdictions to move from ideas to implementation in a unified way
- The model is scalable and adaptable, offering a roadmap that can be customized and replicated across other metropolitan planning areas
- Successful program implementation will require sustained collaboration, reliable funding, and technical support from all participating jurisdictions



14

14

Acknowledgment

This study is funded by the New York Metropolitan Transportation Council (NYMTC) through the University of Transportation Center, Region 2 at Rutgers University



Thank you!

Ruqaya Alfaris
Graduate Research Assistant
Email: alfari24@rowan.edu

Md. Sadman Islam
Graduate Research Assistant
Email: islam26@rowan.edu

Mohammad Jalayer, Ph.D.
Associate Professor
Email: jalayer@rowan.edu



Center for Research & Education in Advanced
Transportation Engineering Systems (CREATES)
rowancreates.org
Telephone: (856) 256-5395
Email: creates@rowan.edu