

PENNSYLVANIA AUTOMATED SCHOOL BUS ENFORCEMENT PROGRAM

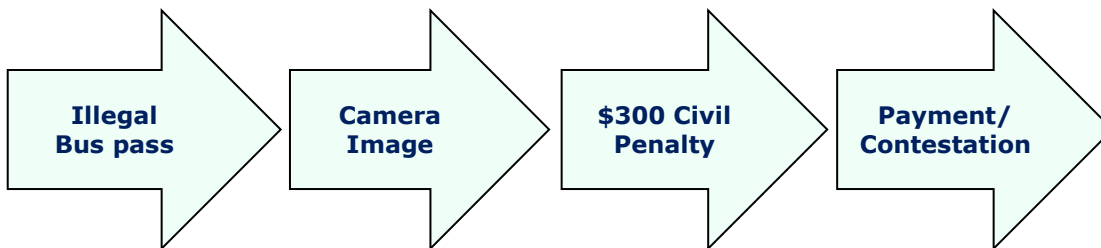


Mid-Colonial District ITE
Annual Meeting
April 2025



1

CONCEPT



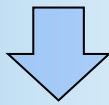
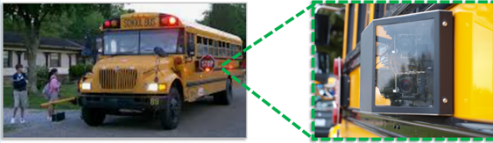
2

ENFORCEMENT OPTIONS

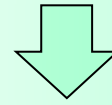
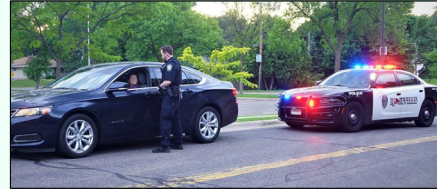
CIVIL

OR

CRIMINAL



\$300 Fine



\$250 Fine + Costs



3

PROGRAM ENTITIES

School Entity: School District, Area Career & Technical School, Intermediate Unit, Charter School, Regional Charter School or Cyber Charter School

System Administrator (Vendor): Company who may act on behalf of School Entity to:

- Install, operate & maintain the electronics or
- Administer the enforcement and contestation records

Primary Police: Municipal police (if present), PSP or School Entity Police Department

Hearing Officers: PennDOT Office of Chief Counsel staff

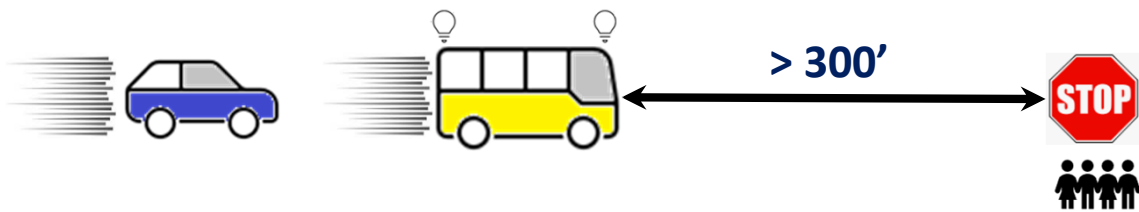


4

ACTIVATION SEQUENCE



No Active Top Lights Over 300' Before Stop

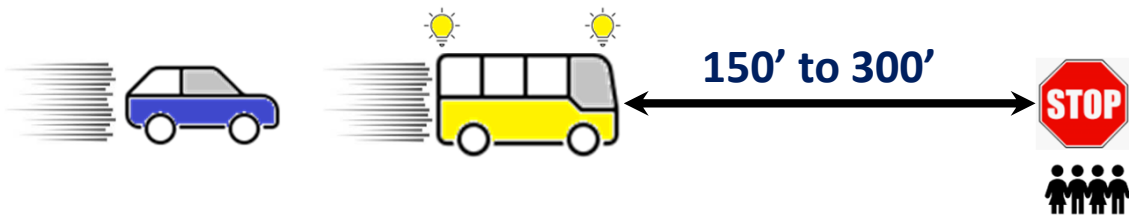


5

ACTIVATION SEQUENCE



Amber Lights Activated 150' TO 300' Before Stop



6

ACTIVATION SEQUENCE



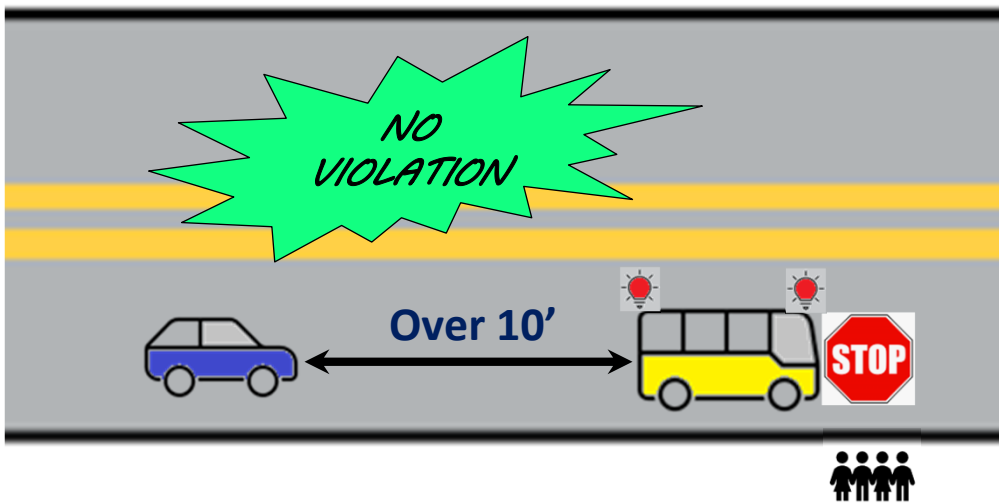
RED LIGHTS, SIDE STOP SIGNAL ARM AND CAMERA
ACTIVATED UPON STOP



7

SCENARIOS

RED LIGHTS, SIDE STOP SIGNAL ARM AND CAMERA ACTIVATED



8

SCENARIOS

RED LIGHTS, SIDE STOP SIGNAL ARM AND CAMERA ACTIVATED

A diagram illustrating a violation scenario. A blue car is positioned to the left of a yellow bus. A double-headed arrow between them is labeled "Under 10'". Above the bus, two red light icons and a red octagonal "STOP" sign are shown. A red starburst shape with the word "VIOLATION" is centered above the car. Below the bus, three black human figures represent passengers. A small green and blue logo is in the bottom right corner.

9

SCENARIOS

RED LIGHTS, SIDE STOP SIGNAL ARM AND CAMERA ACTIVATED

A diagram illustrating a violation scenario. A blue car is shown moving away from a yellow bus, indicated by motion lines behind it. Above the bus, two red light icons and a red octagonal "STOP" sign are shown. A red starburst shape with the word "VIOLATION" is positioned to the left of the bus. Below the bus, three black human figures represent passengers. A small green and blue logo is in the bottom right corner.

10

SCENARIOS

RED LIGHTS, SIDE STOP SIGNAL ARM AND CAMERA ACTIVATED

The diagram illustrates a traffic intersection. A blue car is shown in motion, crossing the intersection. A large green starburst with the text "NO VIOLATION" is positioned to the left of the car. Below the road, a yellow bus is stopped at a red light. A red stop sign is visible next to the bus. Pedestrians are shown waiting at the crosswalk. The scene is set against a grey background representing the road and a green area representing the grassy median.

11

SCENARIOS

RED LIGHTS, SIDE STOP SIGNAL ARM AND CAMERA ACTIVATED

The diagram shows a four-way intersection. A yellow school bus is in the center, with a red stop sign on its side. A blue car is approaching from the top-left, and a light blue car is approaching from the bottom. Text boxes indicate "LOADING OR UNLOADING" above the bus and "MUST STOP" for each of the three other vehicles. A large green box on the left contains the text: "You MUST STOP at an intersection, whether it is or is not marked with a stop sign. All traffic MUST stop." The Pennsylvania Department of Transportation logo is in the bottom right corner.

12

VIOLATION PROCESS

1. Violation occurs
2. Notice of Violation (NOV) mailed to vehicle owner:
 - Within 30 days of identification of vehicle owner
 - Shall not exceed 90 days
3. Vehicle owner pays \$300 fine within 90 days
4. Collection agency acts if not paid within 90 days



13

CONTESTATION PROCESS

1. Notice of Violation (NOV)
2. Request for Hearing – Within 30 days of NOV
3. Administrative Hearing – No scheduling deadline
4. Hearing Disposition – Within 45 days of hearing
5. Request for Appeal to District Magistrate
 - Within 45 days of disposition
6. District Magistrate Hearing (Rare)



14

CIVIL PENALTY

For Violations of §3345.1 Automated Enforcement

1ST AND ALL SUBSEQUENT OFFENSES

- No Warning
- \$300 Fine
 - \$250 to School Entity
 - \$25 to Primary Police
 - \$25 to PennDOT School Bus Safety Grant Program



15

GRANTS

School Bus Safety Grant Program

Three (3) eligible uses:

1. Program administrative costs
2. School bus safety, education and training
3. Bus driver endorsement, CDL or permit

Three eligible grantees for #2 and #3 above:

- School entities, municipalities and bus contractors



16

LEGISLATIVE HISTORY

2018	New law via Act 159 of 2018 – 75 PA CS §§ 3345-3345.1
2019	New temporary regulation – 67 PA Code §171a
2020	Amended law via Act 38 of 2020 – 75 PA CS §§ 3345-3345.1
2023	Amended law via Act 19 of 2023 – 75 PA CS §§ 3345-3345.1
2024	Updated temporary regulation – 67 PA Code §171b
2026	Planned final regulation – 67 PA Code §171c



17

CERTIFIED VENDORS

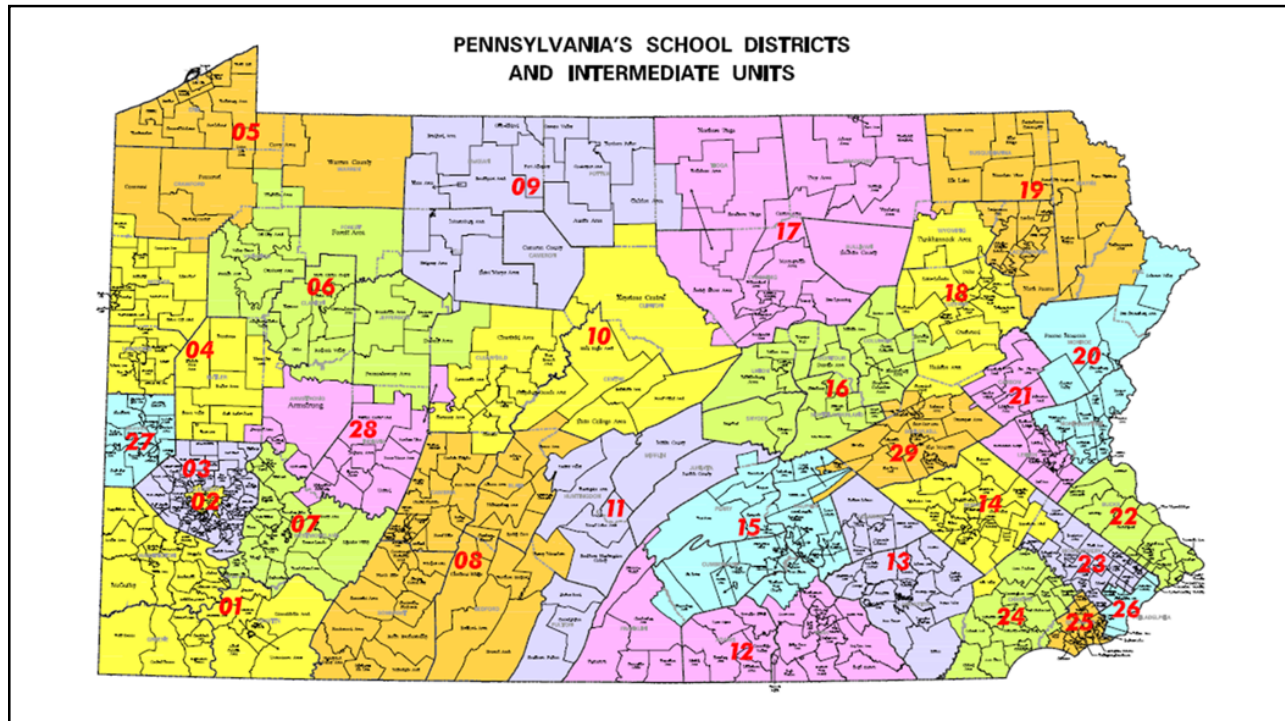
per 67 Pa Code §171b:

AngelTrax	ProVision
Bus Patrol	Seon
Fortress	Zentinel
REI	247 Security

**Updated 2025-04-14*



18



19

PA STATS

As of April 2025

8 Certified Vendors

66 Schools

1,000 Hearing Requests per Month



As of December 2023 per Official Annual Report

1,800 Buses

28 Schools

Approx. 2,000 Notices of Violation per Month

<7% Appeal Rate



20

LESSONS LEARNED

Develop law and regulation only once

Develop logistics with vendors

Plan for data insurgence

Expect schools to desire hands-off programs

Clarify Reporting Requirements

Clarify Internal Expectations/Effort for the Program



21

PROGRAM INFORMATION

PennDOT School Bus Safety Website:

Official Website of the Commonwealth of Pennsylvania

Commonwealth of Pennsylvania

Services Agency Directory Your Government Visit PA News

Agencies > Driver and Vehicle Services > Driver Services > School Bus Drivers & School Bus Safety > School Bus Safety

School Bus Safety

School bus safety is a high priority in Pennsylvania. Students, parents, teachers, administrators, transportation personnel and the motoring public all play important roles in keeping our children safe while on or around the school bus.

Driver & Vehicle Services

Driver Services

Teen Drivers

Safety Tips for School Bus Drivers

School buses are considered the safest form of ground transportation because of their size and construction. They are driven by professional

Resources

School Bus Drivers:



22

Automated School Bus Enforcement - ASBE

QUESTIONS?

Jason Bewley, P.E.
PennDOT Highway Safety and Traffic Operations Division
JBWLEY@PA.GOV

Bradley DiCola, P.E., PTOE
RK&K
BDICOLA@RKK.COM

