



Northeastern Pennsylvania Alliance  
**NEPA**

# Get to Know the NEPA MPO

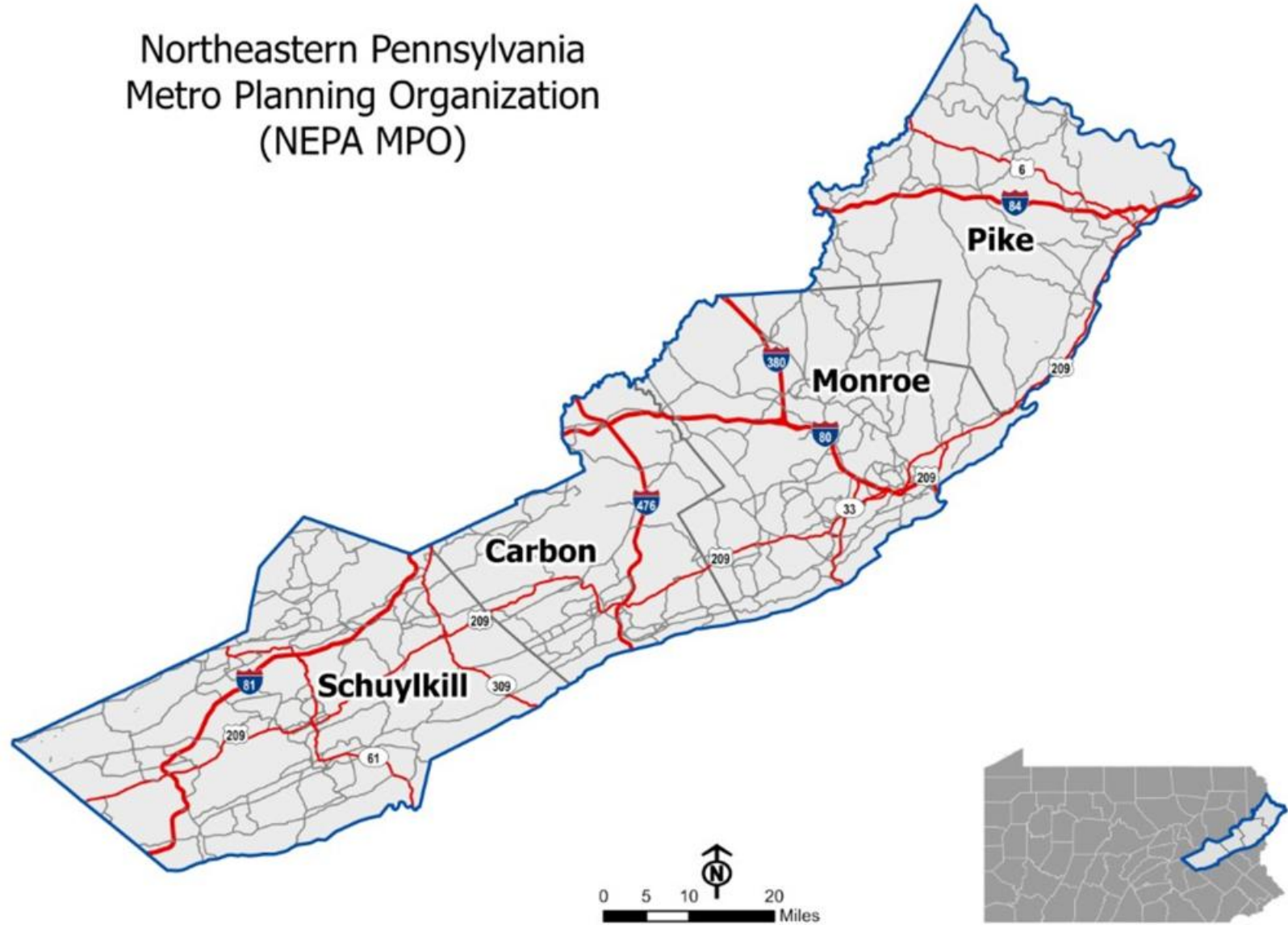
Kate McMahon, AICP

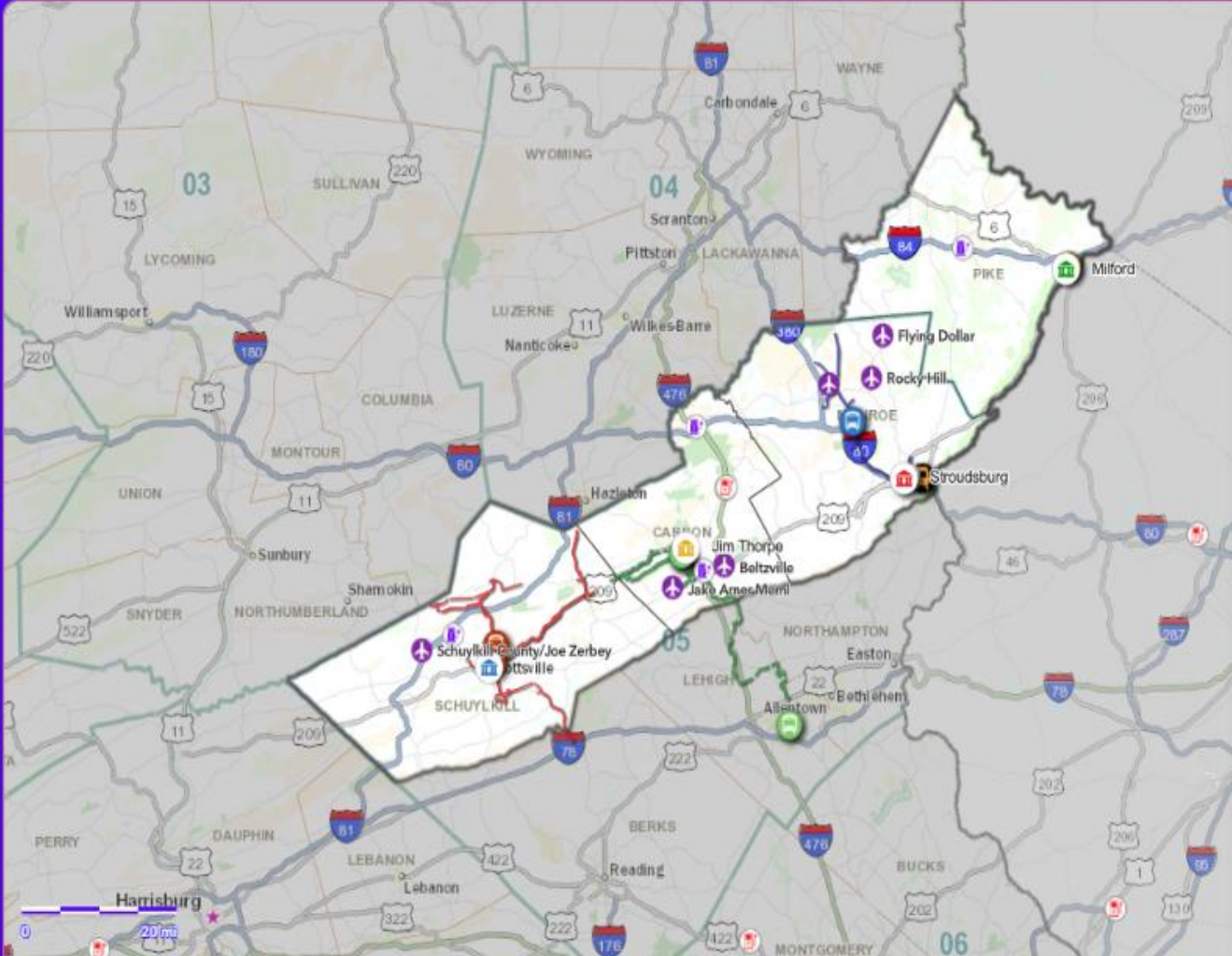


# NEPA MPO Background

The NEPA MPO was established in 2013 following the designation of the East Stroudsburg Urbanized Area. The NEPA MPO includes Carbon, Monroe, Pike and Schuylkill counties.

Northeastern Pennsylvania  
Metro Planning Organization  
(NEPA MPO)





Legend

- Airports**
  - ✈️
- County Seat**
  - 🏛️ Millford
  - 🏛️ Jim Thorpe
  - 🏛️ Pottsville
  - 🏛️ Stroudsburg
- County Planning Partner Contact**
  - 🏢 Carbon County Office of Planning & Development
  - 🏢 Monroe County Planning Department
  - 🏢 Pike County Office of Community Planning & Mapping
  - 🏢 Schuylkill County Planning & Zoning
- Existing EV Charging Stations**
  - 🔌
- Planned EV Charging Stations**
  - 🔌
- Transit Systems**
  - 🚗

Local Bridges > 20 Ft Length

295

State Bridges

1,026

Public Use Airports

6

Miles of Freight Railroad

362

Counties  
**4**

Municipalities  
**123**

PennDOT Engineering Districts 4-0 & 5-0  
**2**

Transit Systems  
**6**

PennDOT Facilities  
**31**

EV Registrations  
**4,912**   
Source: PennDOT 2024 Q4

Existing EV Charging Stations  
**3**

Planned EV Charging Stations  
**4**

Roundabouts  
**1**

Park and Ride  
**3**

Traffic Signals  
**236**

Miles of Bicycle PA Routes  
**135**

© 2014-2019 PA Department of Transportation | Sources: Esri, U.S. Department of Commerce, Census Bureau, U.S. Department of Commerce (DOC), National Oceanic and Atmospheric Administration (NOAA)

# NEPA MPO Staffing

Kate McMahon, AICP Vice President	Jonathan Shaw Transportation Planning Manager	Nettie Ginocchetti, GISP GIS Services Manager	Daniel Yelito Transportation Services Manager
TIP & LRTP Project Management	MPO Administrative Activities	GIS Mapping & Data Analysis	Local Asset Inventory
UPWP Administration & Contract Oversight	Bike/Ped, Trails and Transportation Alternatives	Drone Project Visualization	HPMS Data Collection
MPO Planning Studies	Public Outreach- Title VI, EJ and LEP Activities	Public Outreach- Social Media	Local Technical Assistance Program (LTAP)

# NEPA MPO Core Functions

 Administration and coordination of MPO meetings

 Compliance with federal and state planning requirements

 Preparation and maintenance of a Long-Range Transportation Plan

 Development of a fiscally constrained Transportation Improvement Program



# Transportation Improvement Program



# NEPA MPO 2027-2030 Transportation Improvement Program (TIP)



Identifies the highest priority transportation projects to be funded in the NEPA MPO region including bridge, highway, interstate and transit projects.



Shows estimated cost of each project and projected schedule for completion of the project.



Covers a four-year period of investment and must be fiscally-constrained.





# NEPA MPO 2027-2030 Transportation Improvement Program (TIP)

- Is developed with significant input from PennDOT districts, counties, municipalities and transit agencies.
- Includes a 30-day public comment period beginning in May. The comment period includes a public meeting with four in-person locations.

# NEPA MPO TIP Hub



2027-2030 Draft TIP for the NEPA MPO



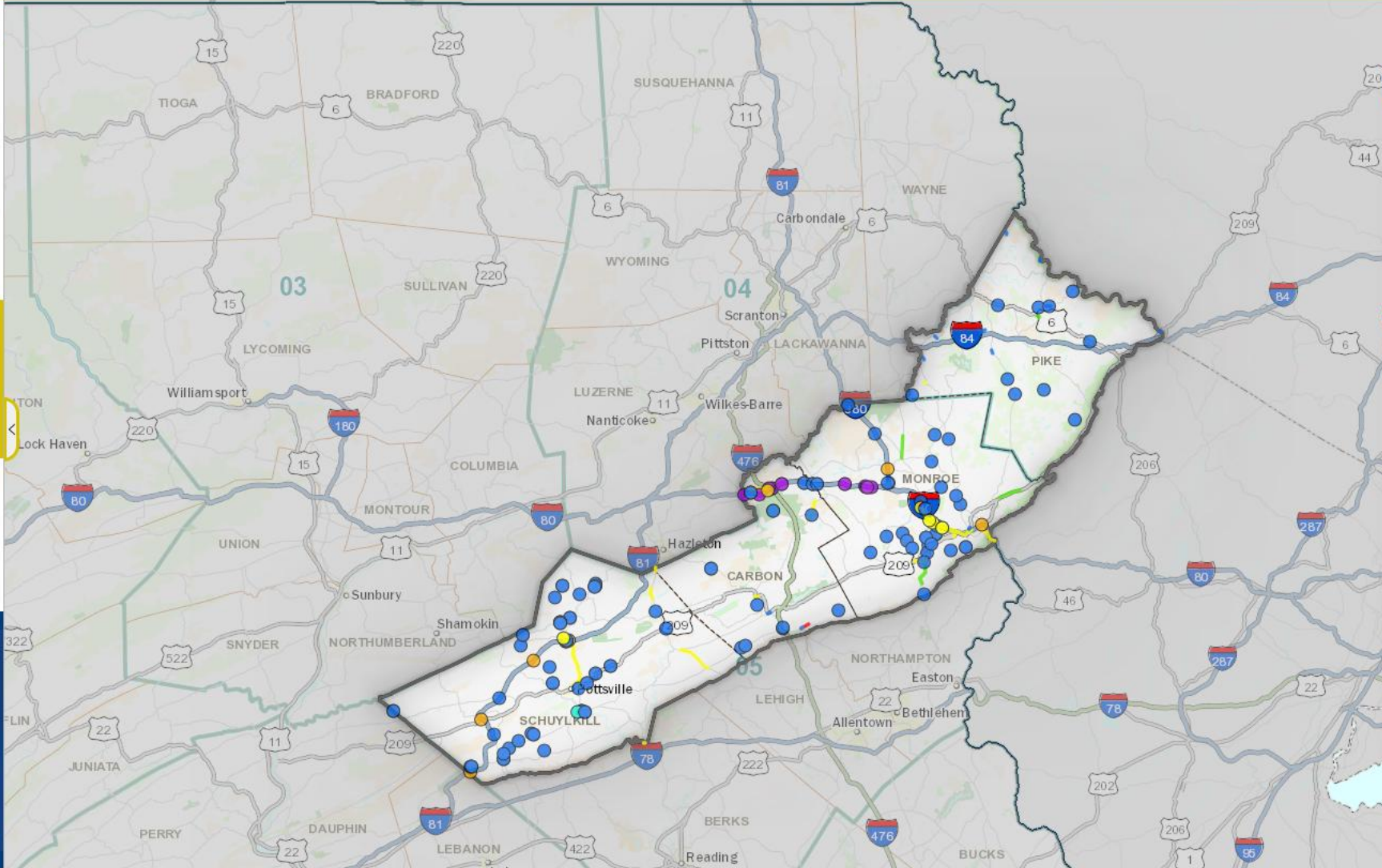
## TRANSPORTATION IMPROVEMENT PROGRAM

The Transportation Improvement Program (TIP) was developed in collaboration with PennDOT, FHWA, and the region's transit partners.

Federal regulations require the Northeastern Pennsylvania (NEPA) as the designated Metropolitan Planning Organization (MPO) for Carbon, Monroe, Pike and Schuylkill Counties, to develop and maintain a Transportation Improvement Program (TIP).

Bridge & Highway TIP	Transit TIP	Interstate TIP
96 Projects	29 Projects	6 Projects
\$231.3 Million	\$54.3 Million	\$304.2 Million

A TIP lists planned projects and assigns funding over a four-year period. TIPs cover regional projects and statewide initiatives. The TIP is updated every two years through a cooperative effort of local, state and federal agencies, including participation by the general public.



## Legend

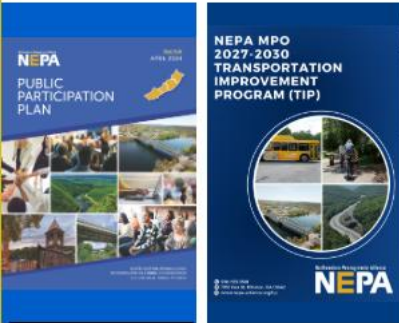
### Draft TIP Project Points

- 150 Total Projects
- Bridge Preservation - Federal & State
  - Funded | Bridge Replacement | Bridge Restoration
  - Highway Reconstruction | Restoration
  - Intelligent Transportation System
  - Interstate Maintenance Program
  - Study Phase of Project

### Draft TIP Project Lines

- 108 Total Projects
- Bridge Preservation - Federal & State
  - State Funded | Bridge Replacement | Bridge Restoration
  - Congestion Reduction
  - Highway Reconstruction | Restoration
  - Safety Improvement
  - Study Phase of Project

### NEPA MPO Planning Partner Region



# Drone Mapping and Visualization Program



# Drone Mapping and Project Visualization

## NEPA UAS Mapping and Visualization powered by ArcGIS Story Maps

Northeastern Pennsylvania Metropolitan Planning Organization



### Drone Mapping and Visualization Program

Drone Mapping and Visualization Program Northeastern...

Explore



### 2027-2030 Draft Transportation...

2027-2030 Transportation Improvement Program initiativ...

Explore



### Carbon County Bridges

This StoryMap highlights in Carbon County, PA targeted to..

Explore



### Navigating Tomorrow

PA 611 Corridor Study in Monroe County, Pennsylvania

Explore



### 2050 Long-Range Transportation Plan

Northeastern Pennsylvania Metropolitan Planning Organization 2050 Long-Range Transportation Plan Update

Explore

# MPMS 113878: Mt Nebo to Holy Cross

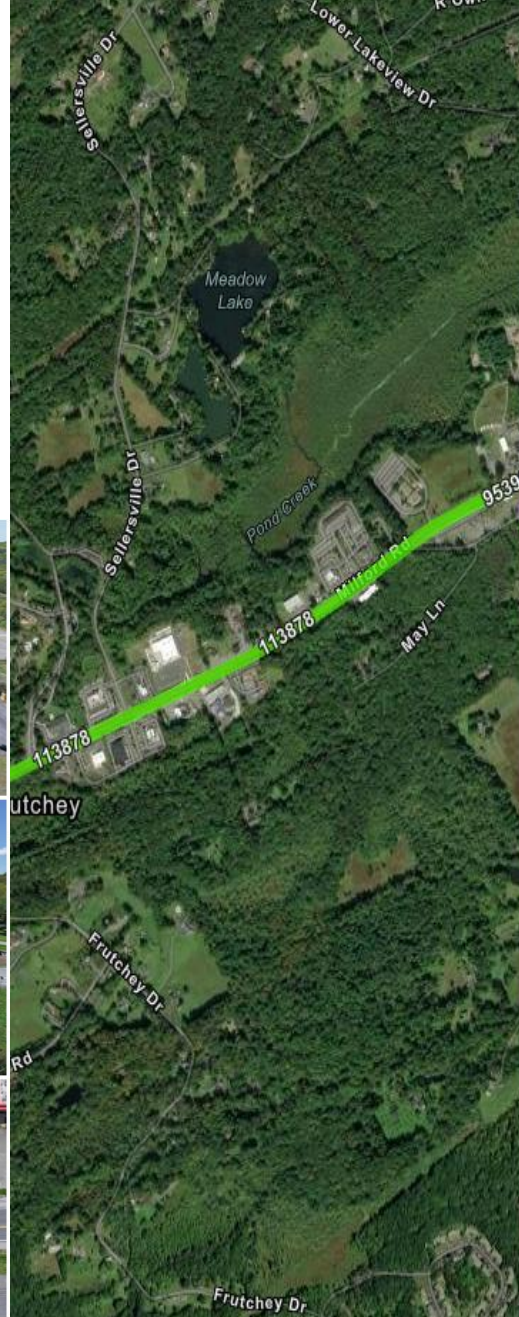
County: Monroe

Route: SR 209 (Milford Road)

Improvement Type: Corridor Safety Improvements

AADT: 1,013

Corridor improvement project involving widening of shoulders and potential center turn lane along Milford Road from Mt. Nebo Road/Oak Grove Road to Holy Cross Drive in Middle Smithfield Township, Monroe County.



## SR 209 Mt Nebo to Holy Cross

Project ID 113878

State Route 209 from Mount Nebo to Holy Cross  
Road Middle Smithfield Township Monroe County.



NEPA UAS 5.2.2024

# Drone Mapping and Project Visualization

## Pike County UAS

Share



Pike County Courthouse



Milford, PA



Mott St Bridge



State Route 6 over Delaware River



# Active Transportation Plan





# Active Transportation Plan



The 2050 LRTP identified Active Transportation as a strategic direction and recommended the development of a regional Active Transportation Plan.



The development of the Active Transportation Plan was kicked off in May 2024 and was adopted in June 2025.



Michael Baker International was engaged to assist in the plan development.

# Plan Recommendations



## A. Safety

- LTAP Classes and sessions
- Safety Data as part of TIP Updates



## B. Accommodation

- Bike racks on buses
- Assist with WalkWorks
- Use of BLOS and PLOS analyses



## C. Connectivity

- Sidewalk inventories
- PennDOT Connects process
- Promote use of official maps



## D. Monitoring + Tracking

- Report card of progress
- Public tool or online portal

# Active Transportation Projects

## Project Priorities (47 total):



- High – 26
- Medium – 10
- Low - 11

## Scoring Measures:



- ATP survey; SWOT/Listening Sessions; 2050 LRTP; STC survey; other plans.
- Bicycle and Pedestrian Level of Stress
- Crash Data
- STRAVA (Bicycle and Pedestrian).

Project Title	Project Description	County	Priority	Ownership	Time (Yrs)	Priority Partnerships
Expansion of Bike Parking & Bike Paths in Jim Thorpe Borough	Bicycle parking accommodations and analysis of bicycle traffic patterns	Carbon	High	Carbon County	Short	Jim Thorpe Borough
Sidewalk Improvements & Bicycle Accommodations in Lehighton Borough	Bicycle accommodations needed including dedicated bike lanes, wider shoulders, and improved sidewalks	Carbon	High	Carbon County	Short	Lehighton Borough
Delaware Ave Safety Improvements in Palmerton/Safety Study	Safety improvements needed along Delaware Ave in Palmerton. High number of crashes and pedestrian activity	Carbon	High	Carbon County	Short	Palmerton Borough
Hazard Square / Broadway / Susquehanna / Race Pedestrian Improvements in Jim Thorpe	<i>Install safe crossings, shared &amp; loading zones, wayfinding signage, and additional sidewalk facilities. Source: Jim Thorpe Complete Streets Analysis (2020)</i>	Carbon	High	Carbon County	Medium	PennDOT, Jim Thorpe Borough, CCCT/LANTA
Lansford, Nesquehoning, and Jim Thorpe D&L Gap Connection	Establishing a connection from Lansford to Nesquehoning and to the D&L Trail following US 209 and ultimately to Jim Thorpe is desired	Carbon	High	911 Memorial Trail Alliance	Long	DLNHC; Municipalities; Schuylkill River Greenway Alliance
Kistler / Lackawanna / Chestnut—Bicycle Boulevard	<i>Catalyst Project - Install shared lane pavement markings (sharrows). Install Bicycle May Use Full Lane Signs or other bicycle wayfinding signs. Install speed humps to slow traffic</i>	Monroe	High	Monroe County	Short	PennDOT



# Plan Implementation



Add an Active Transportation page to website:  
[www.nepa-alliance.org/active-transportation](http://www.nepa-alliance.org/active-transportation)



Establish Active Transportation Task Force



Identify priorities among plan recommendations



Consider identified projects during PennDOT Connects and grant application reviews



Track Implementation on annual basis

# Downtown Studies



# Jim Thorpe Parking and Complete Streets Study



As a year-round destination for tourism and visitor activities, Jim Thorpe has been experiencing a growing problem of accommodating adequate parking in the downtown area.



The Parking Analysis and Complete Streets Study identifies short and mid-range proposals to minimize conflicts between modes, maximize parking facilities, and accommodate efficient movement of pedestrians, vehicles and bicyclists, safely and efficiently.



The study was completed in 2020.



# Milford Borough Traffic, Parking and Complete Streets Study



NEPA worked with Pike County and Milford Borough towards the completion of a traffic study and parking analysis of downtown Milford.



Milford has been experiencing high traffic volumes including significant truck traffic, congestion and parking issues in the downtown area.



The study recommended strategies and projects to address traffic circulation and congestion issues, traffic signals and signage, turning movements, pedestrian safety and parking shortages.



The study was completed in August 2022.



# SR 2001 Alternatives Analysis



# Study Background



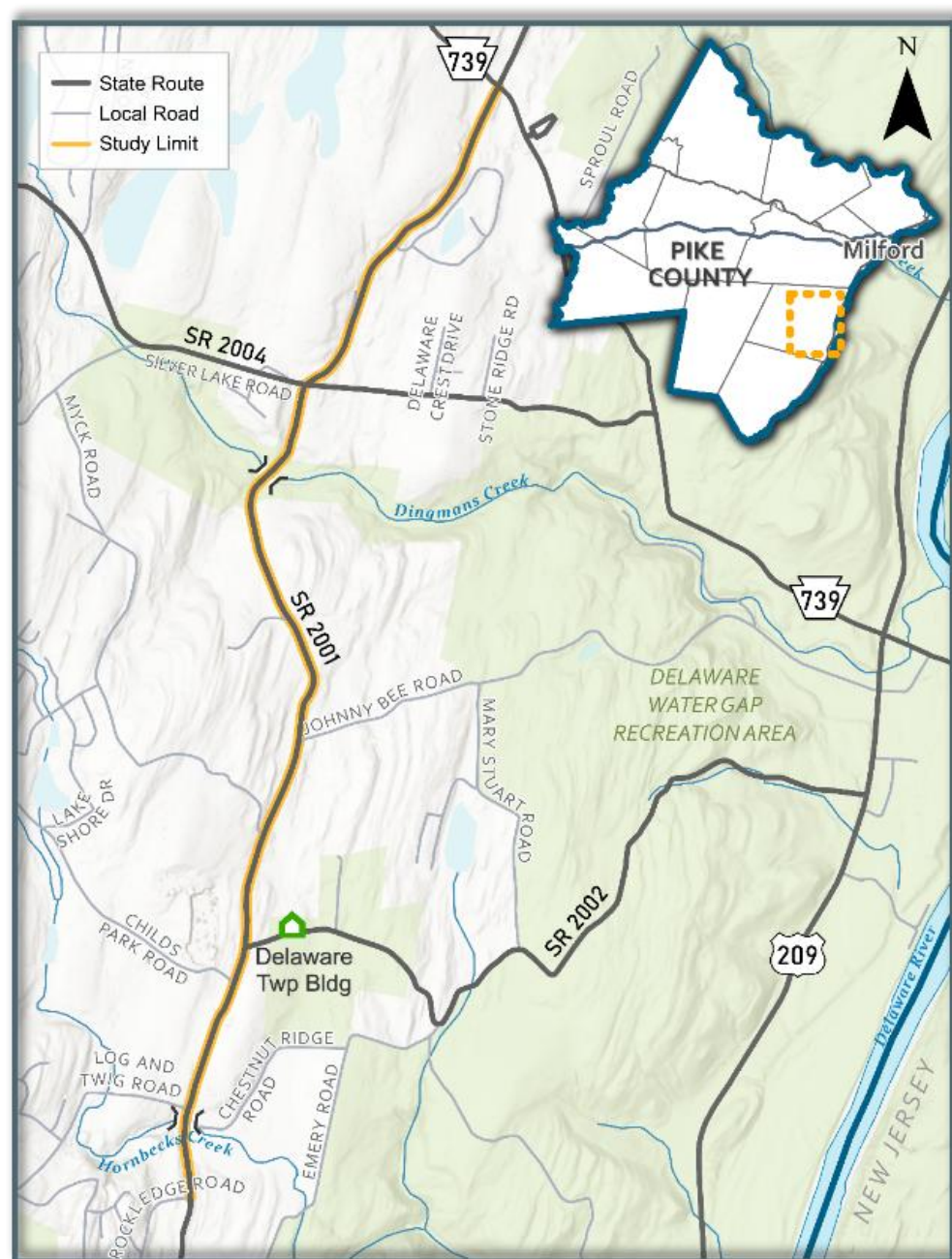
**Trend of Car and Bicycle crashes along the corridor**



**Increase in growth and land development, increasing traffic and safety concerns**



**Study will address current challenges, plan for future growth, and create a safer network.**



# Stakeholder Engagement



PennDOT



Delaware Township



Delaware Valley School District



National Park Service

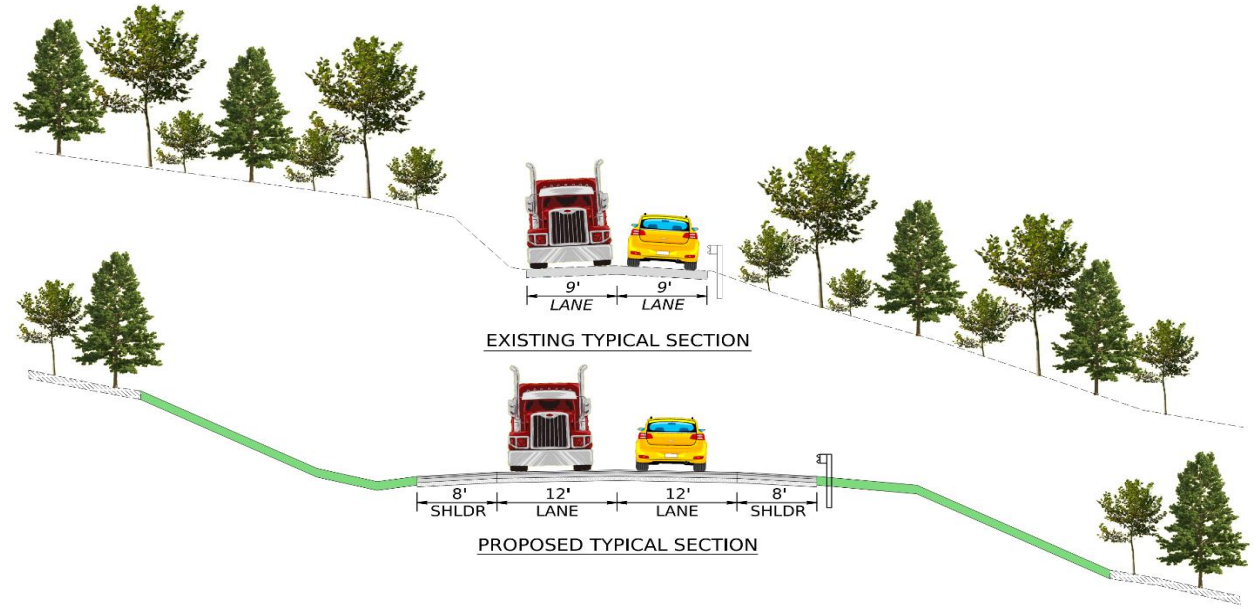
## Interview Findings



- Narrow Lane Widths
- Drainage Problems
- Sight Distances
- Commercial Vehicle Accommodation

- Lack of Signage
- Narrow Shoulders
- Low trees and branches
- Intersection improvements needed

# Recommendations



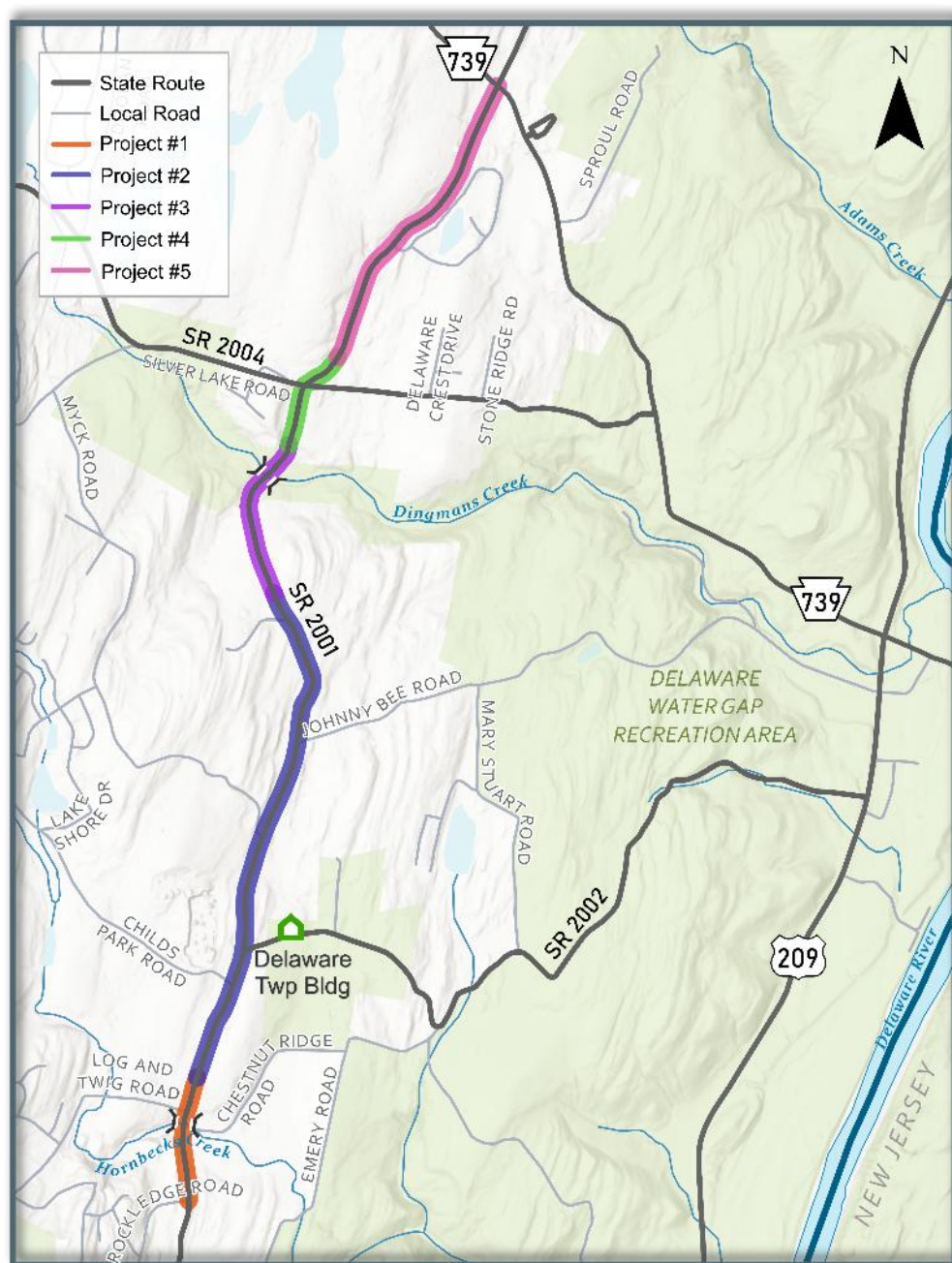
**Hornbeck and Dingmans Creek  
Bridge Replacements**



**SR 2001 Widening & Reconstruction  
(Split into 4 Projects)**



**SR 2001/SR 2004 Intersection  
Improvement Project**



# Low-Cost Safety Improvements



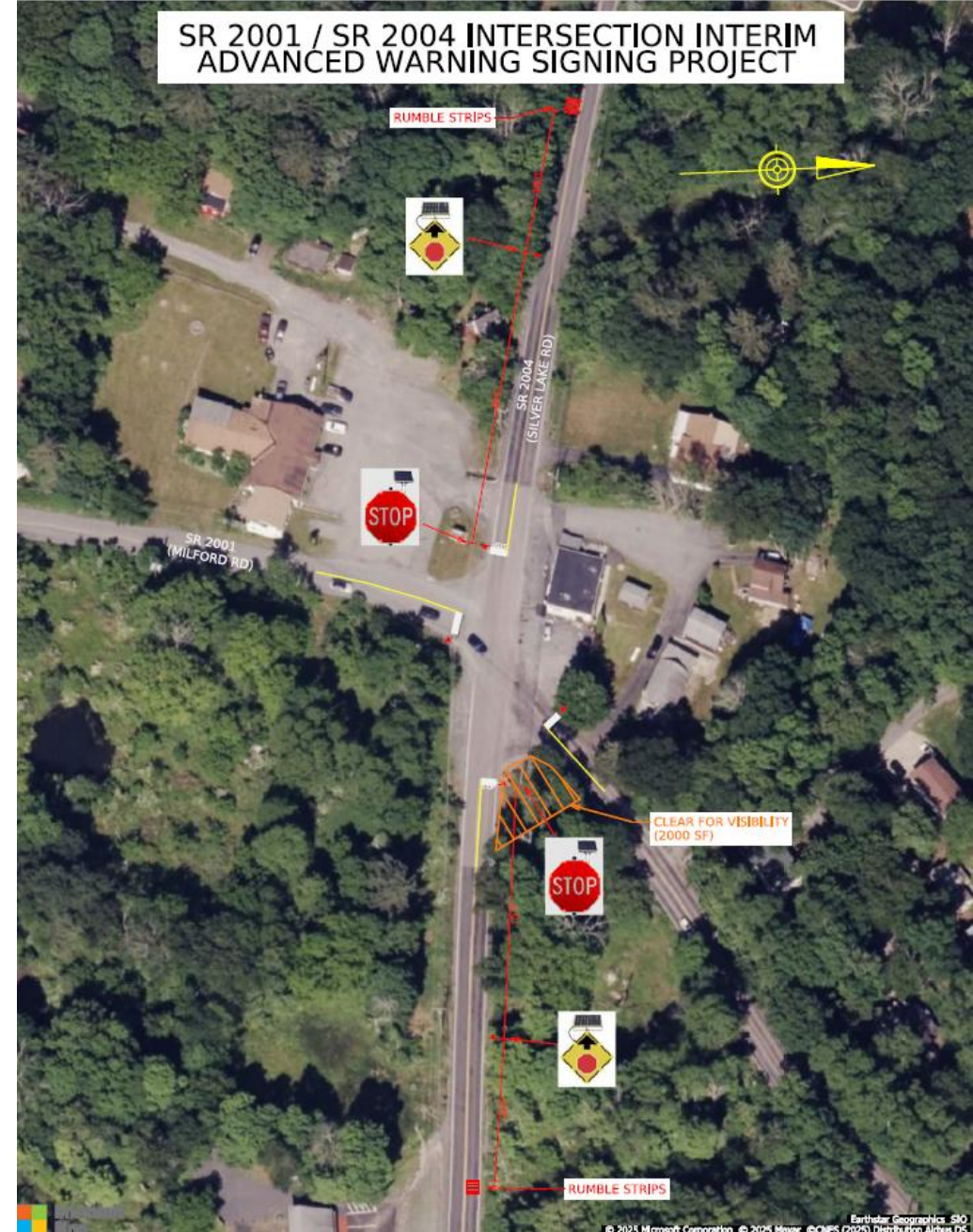
SR 402 Truck Routing Signage Project



SR 2001/SR 2004 Intersection Advanced Warning Project



Guardrail Installation and Crown Lifting



# PA 611 Corridor Study



# Study Background



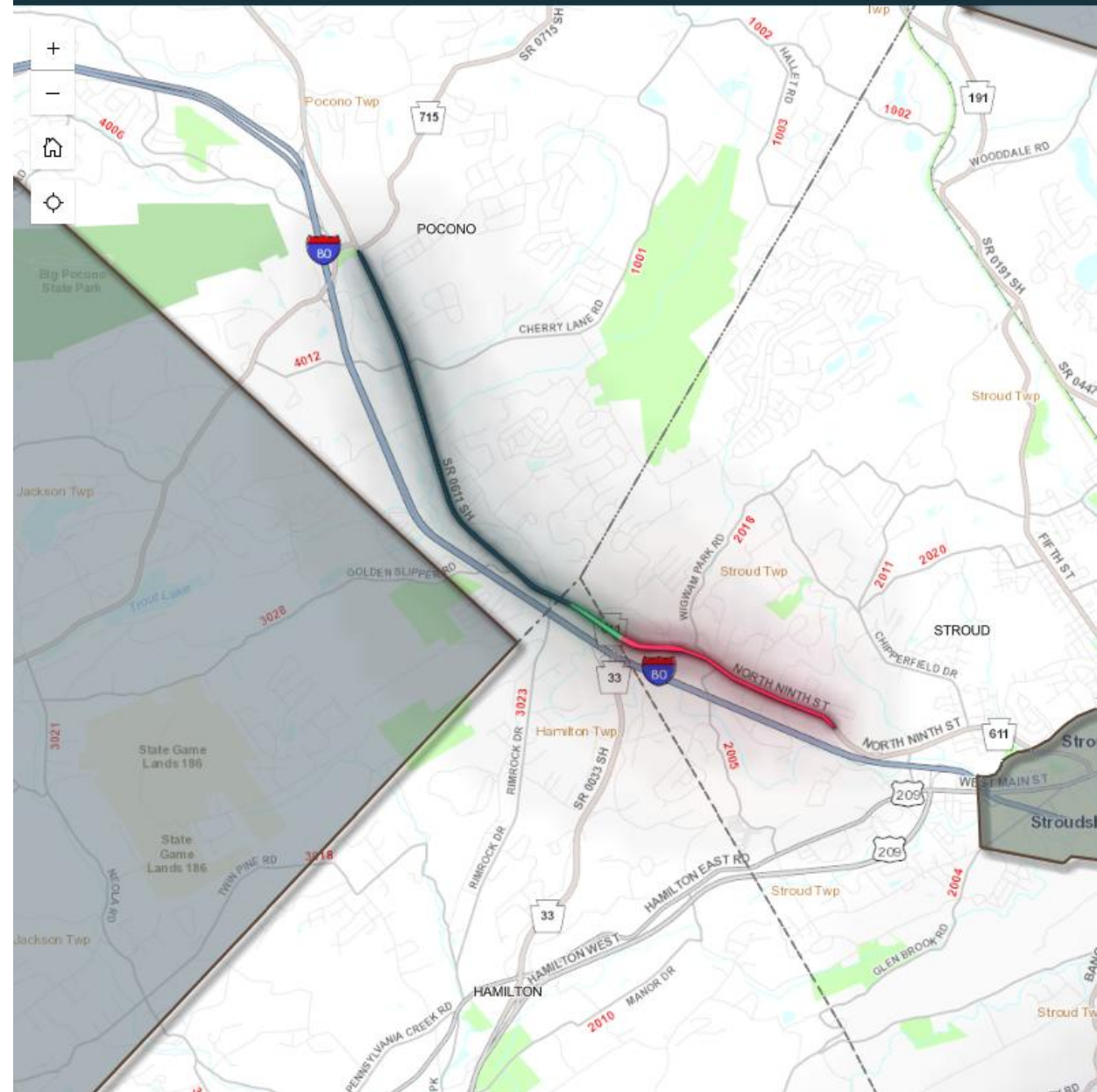
**Trend of Car and Bicycle crashes along the corridor**



**Increase in growth and land development, increasing traffic and safety concerns**



**Study will address current challenges, plan for future growth, and create a safer network.**



# Public Engagement



Open House was held on January 21, 2026, to identify public concerns and ideas



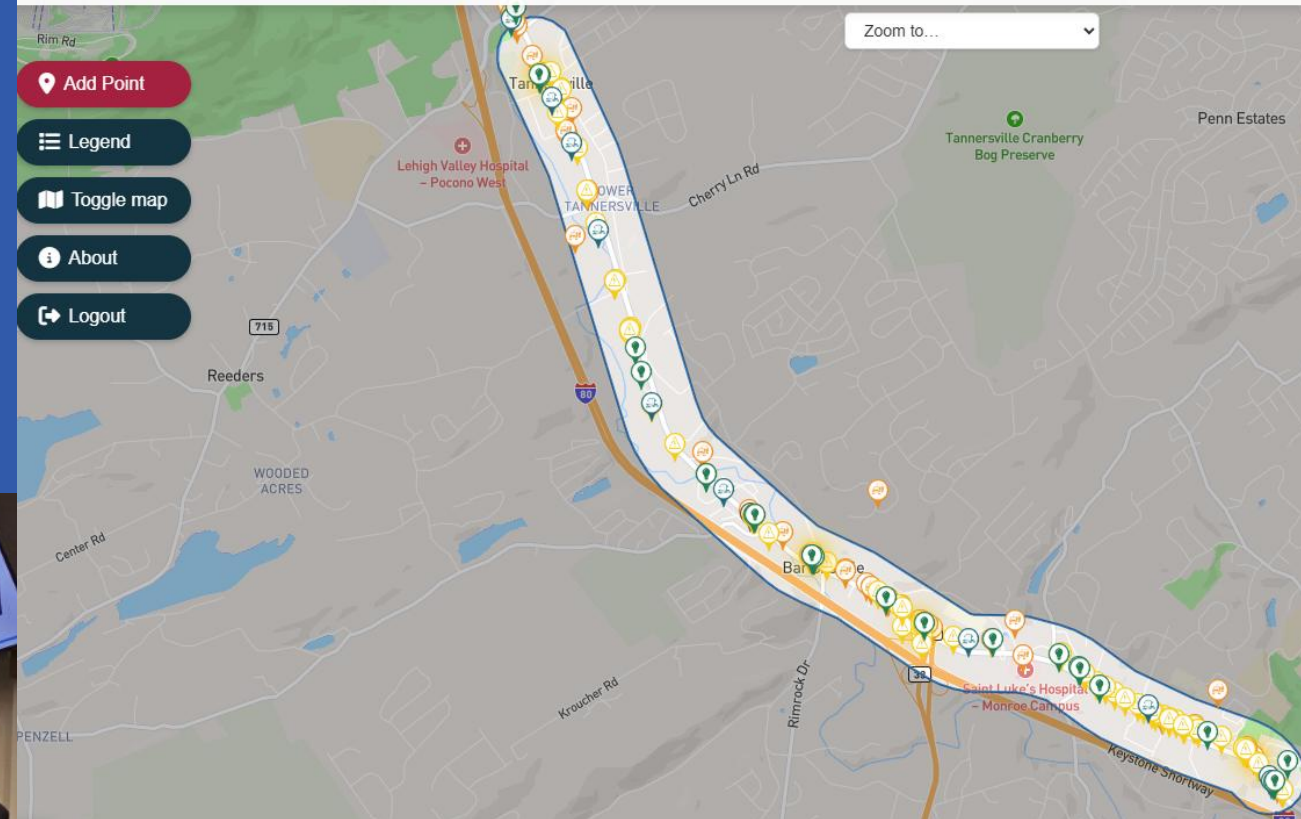
Second Open House is planned for May 6, 2026, to present project recommendations to the public.



## Public Input Map

### Instructions

- 1 Use the "Add Point" button to share your thoughts on corridor concerns and ideas
- 2 Click on the location on the map where you would like to place your pin
- 3 Add your feedback and click Continue
- 4 Show support for existing pins by giving a thumbs up and/or leaving a comment

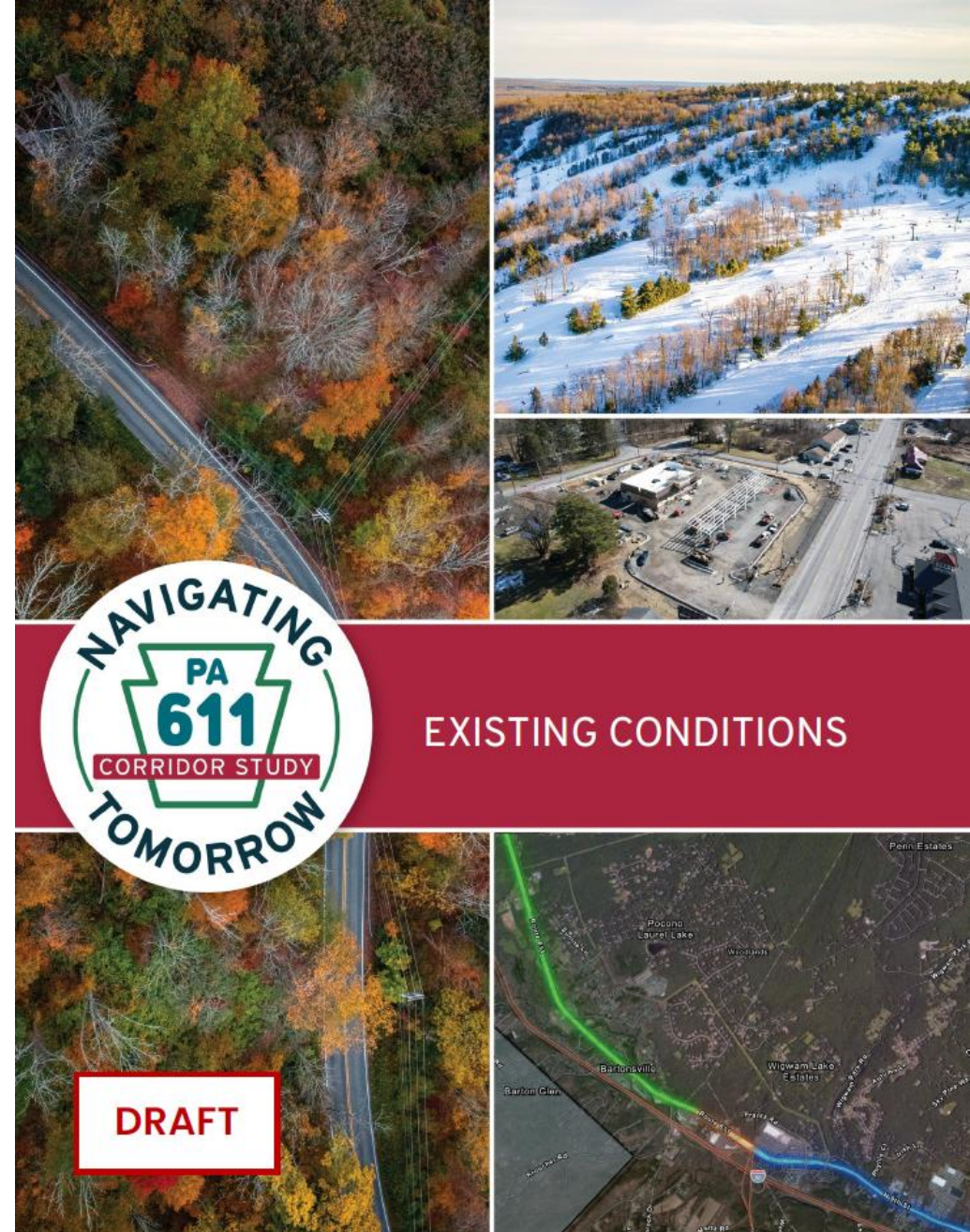


Public Survey ran from January 7 to February 13. The public was able to place pins along the corridor and leave suggestion comments.

# PA 611 Corridor Study Next Steps



- Existing Conditions Report is complete.
- Sketch planning analysis is underway.
- Study recommendations are being developed
- Completion is expected by June 2026.



EXISTING CONDITIONS

DRAFT

Northeastern Pennsylvania Alliance

**NEPA**

# Questions?

Kate McMahon, Vice President

NEPA Alliance  
1151 Oak Street  
Pittston, PA 18640  
570-891-4670 Ext. 249

[www.nepa-alliance.org](http://www.nepa-alliance.org)