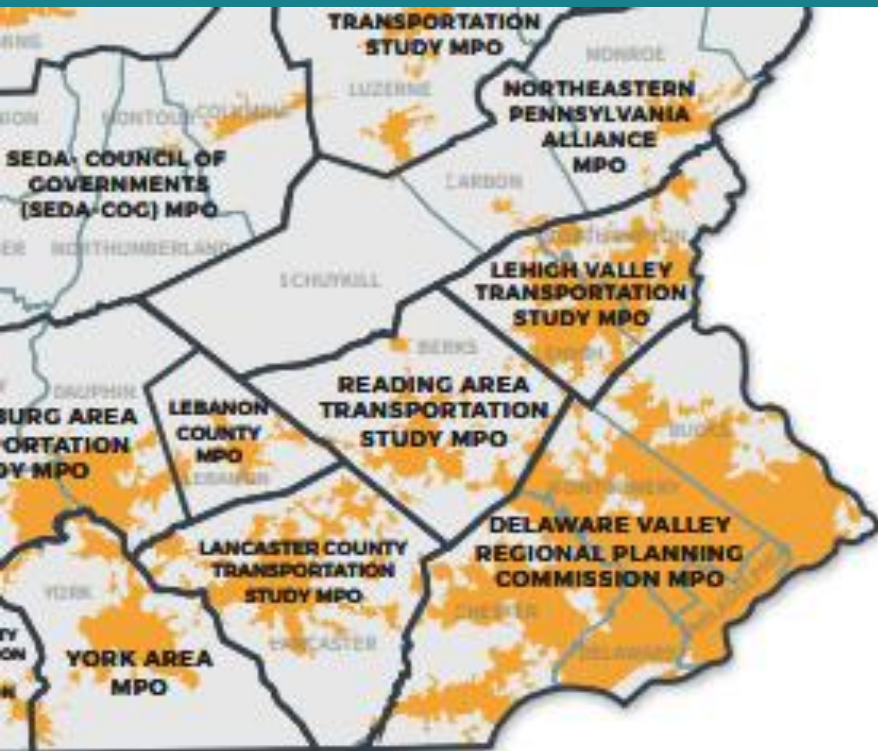




# About us



The Reading Area Transportation Study (RATS) is the Metropolitan Planning Organization for all of Berks County.

Area- 864 Square Miles

72 Municipalities

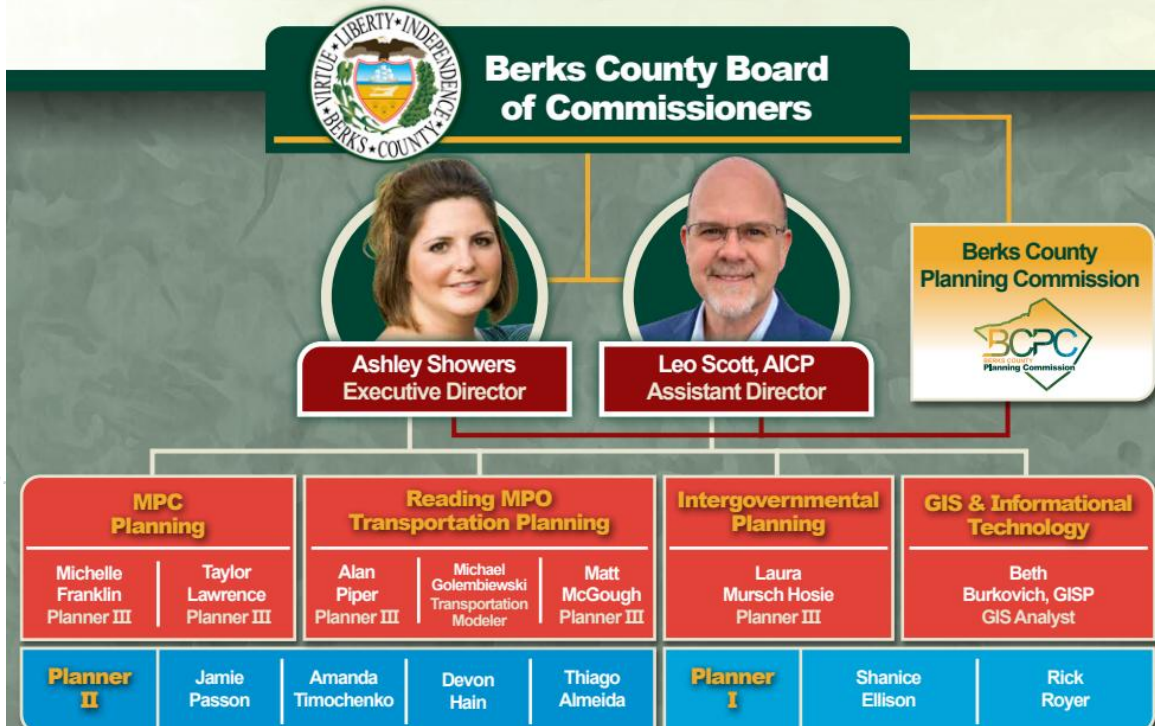
County Seat – City of Reading

County Population – 439,117 (2024 ACS)

Urban Area Population – 283,546 (2024 ACS)

- We are a designated as a Transportation Management Area

# BERKS COUNTY PLANNING COMMISSION ORGANIZATIONAL CHART



- Berks County Planning Commission – 16 Total Employees
- 5 of those with Primary Responsibility for Transportation Planning / MPO Activities including in-house traffic modeling and traffic counting  
(Combined experience - 139 Years!!!!)

## READING AREA TRANSPORTATION STUDY 2026

### Reading Area Transportation Study Coordinating Committee

PennDOT District 5-0	Mr. Chris Kufro, District Executive (Chair) Ms. Jennifer Ruth, Planning & Program Manager*
PennDOT Central Office	Mr. Ray Green, Chief of Financial and Contract Services, Center for Program Development and Management Mr. Nick Raio, Trans. Planning Specialist Supervisor * Mr. Michael Rivera, Commissioner
Berks County Commissioners Berks County Planning Commission	Mr. Thomas McKeon, Board Member (Vice Chair) Mr. Alan Piper, Transportation Planner III (MPO Secretary)* Ms. Donna Reed, Council Member Mr. O. Chris Miller, Council Member*
City of Reading	Mr. Brian Hoffa, Borough Council Member (Sinking Spring Borough) Ms. Lisha Rowe, Township Commissioner (Cumru Township)
Berks County Boroughs	Mr. Arthur "Ray" Lambert, Township Supervisor (Upper Bern Township)
Berks County 1 <sup>st</sup> Class Townships	Mr. Greg Downing, Executive Director
Berks County 2 <sup>nd</sup> Class Townships	Mr. Keith Boatman, Assoc. Director of Capital Projects/Planning*
South Central Transit Authority / Berks Area Regional Transportation Authority Reading Regional Airport Authority	Mr. Dante Santoni, Jr., Board Member

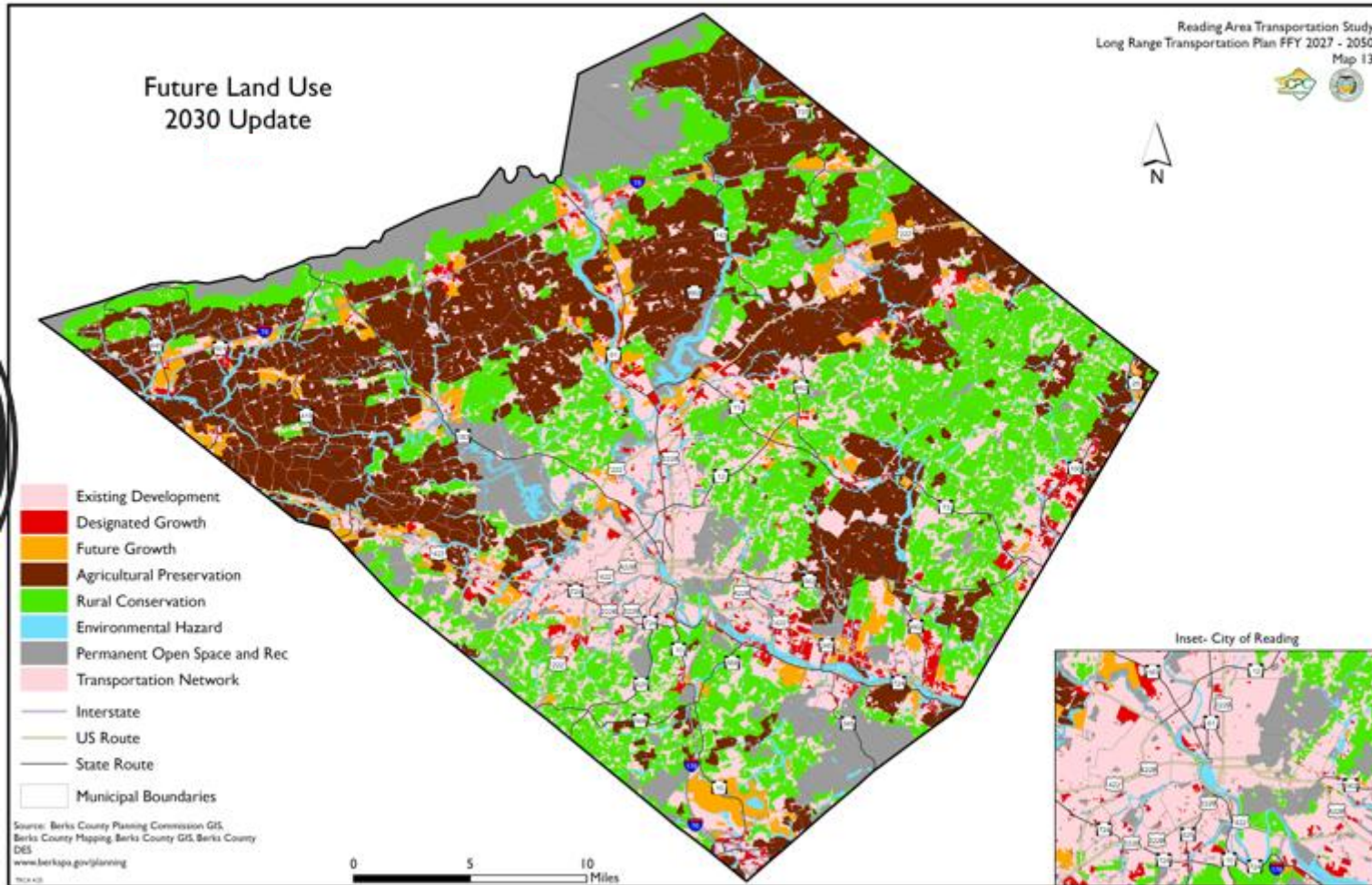
### Reading Area Transportation Study Technical Committee

PennDOT District 5-0	Mr. Scott Vottero, District Executive for Design (Chair) Mr. Michael Donchez, Transportation Planning Specialist*
PennDOT Central Office	Ms. Nyomi Nonnemaker, Transportation Planning Specialist (Vice Chair) Mr. Nick Raio, Trans. Planning Specialist Supervisor * Mr. Alan Piper, Transportation Planner III (MPO Secretary)
Berks County Planning Commission	Ms. Amanda Timochenko, Transportation Planner II* Mr. Michael Golembiewski, Transportation Modeler Ms. Amanda Timochenko, Transportation Planner II*
Berks County Planning Commission	Mr. Donald Edwards, Reading City Engineer Mr. Kyle Zeiber, Department of Public Works
City of Reading	Mr. Keith Boatman, Assoc. Director of Capital Projects/Planning
City of Reading	Ms. Lauri Ahlskog, Manager of Transit Planning & Compliance*
South Central Transit Authority / Berks Area Regional Transportation Authority Reading Regional Airport Authority	Mr. Zackary Tempesco, Airport Manager

\* Denotes Board Alternate

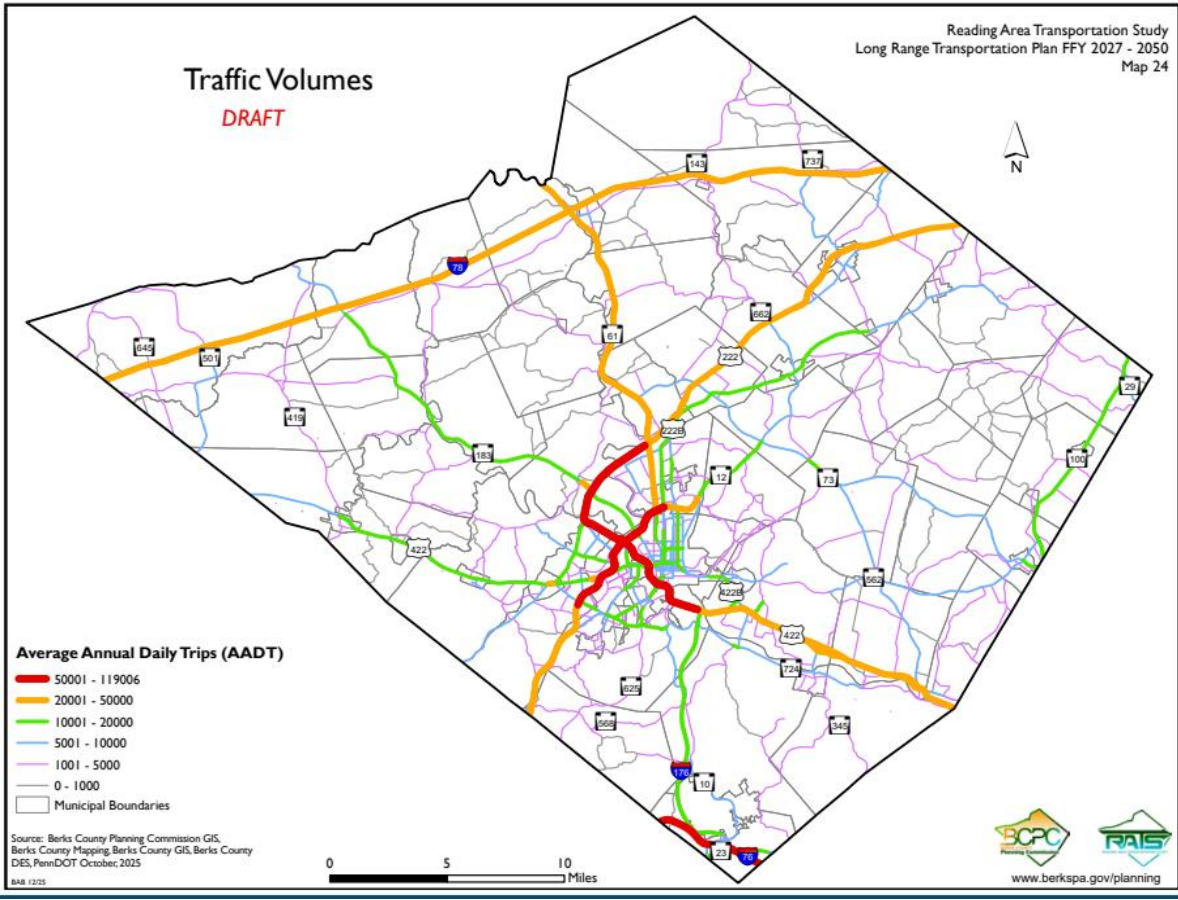


# About us



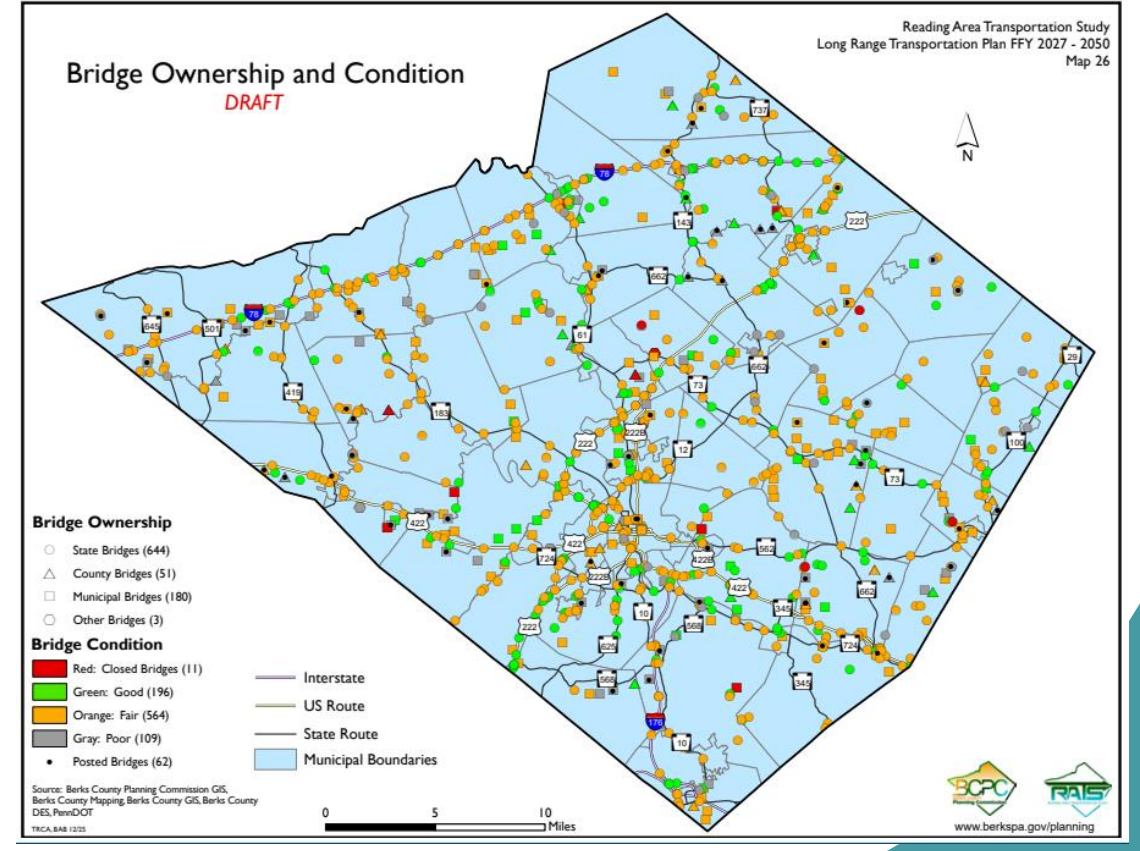
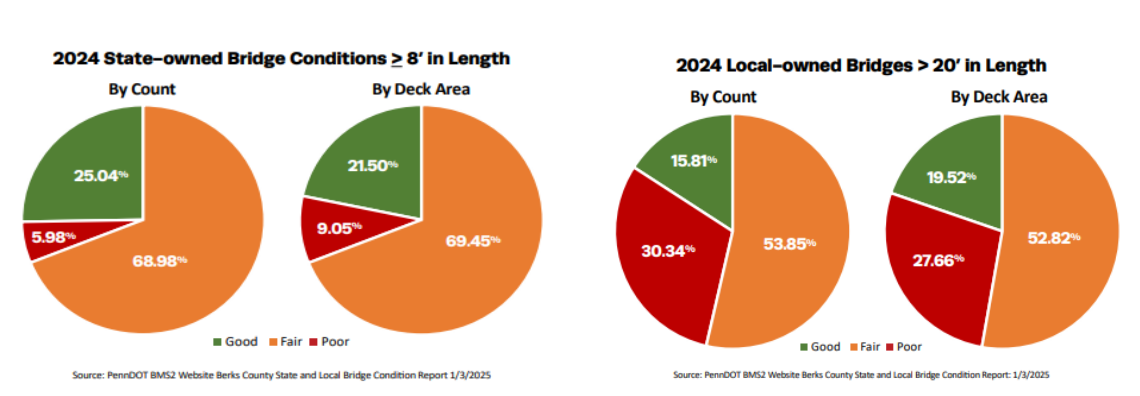
Berks County has a dense urban core surrounded by suburban development extending along US Routes 222 and 422, and PA Routes 61 and 100.

The majority of the county is rural and predominantly farmlands and forest.

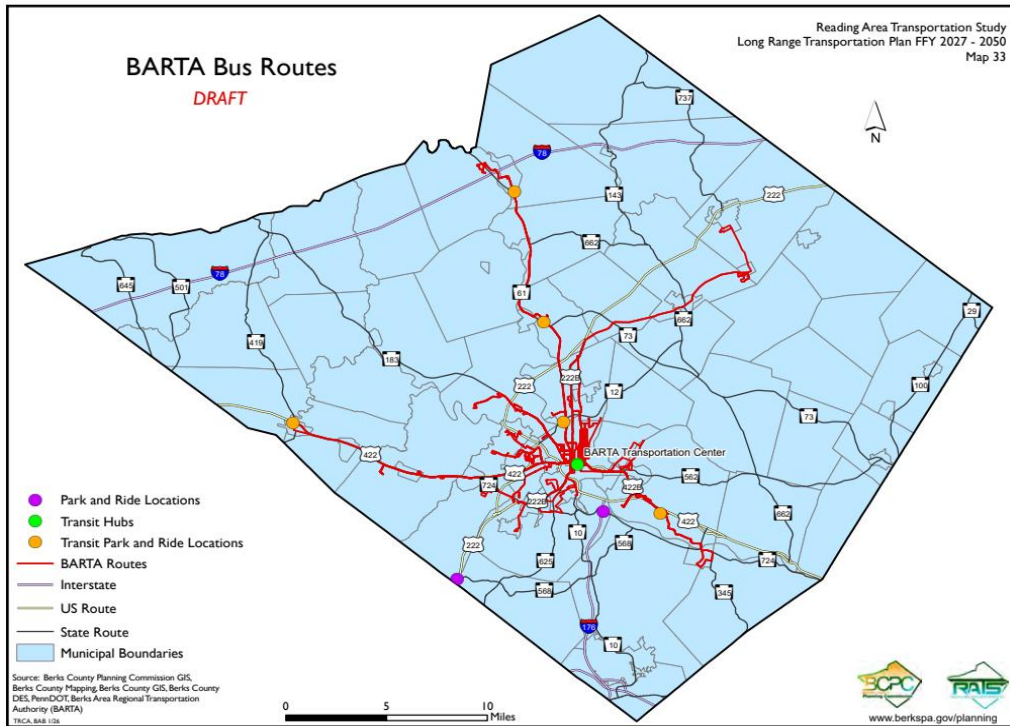


### ROAD OWNERSHIP BY AGENCY 2024

Agency	Linear Miles	%
Local	2,413.18	73.29%
PennDOT	872.60	26.50%
Other State/Federal	2.02	0.01%
Turnpike	4.74	0.14%
<b>Total</b>	<b>3,292.54</b>	<b>100.00%</b>







### South Central Transit Authority / BARTA Division

- Serves City of Reading, 17 Boroughs and 15 Townships
- Carries approximately 2.2 million passengers annually
- 50 buses operating on 19 routes
- Special Services Operations provided 176K paratransit trips in 2025 for Shared Ride, ADA, and MATP

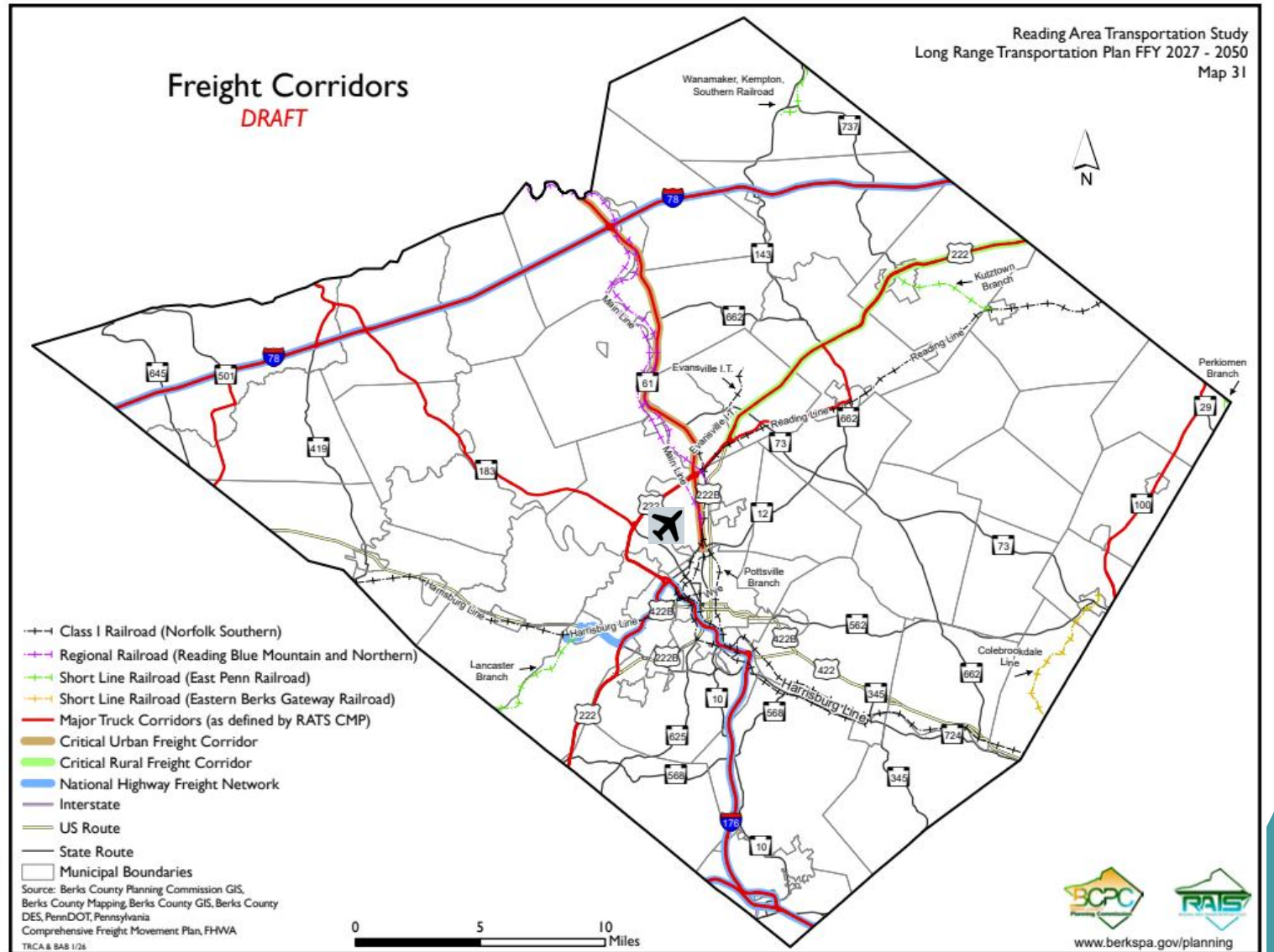
### Schuylkill River Passenger Rail Authority

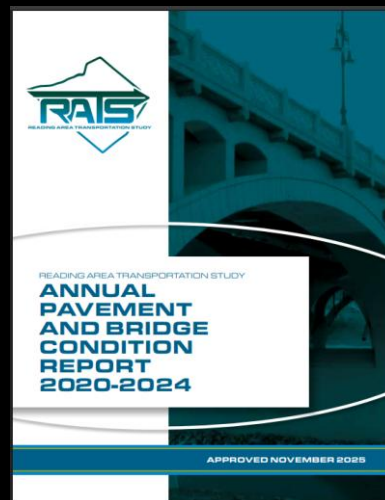
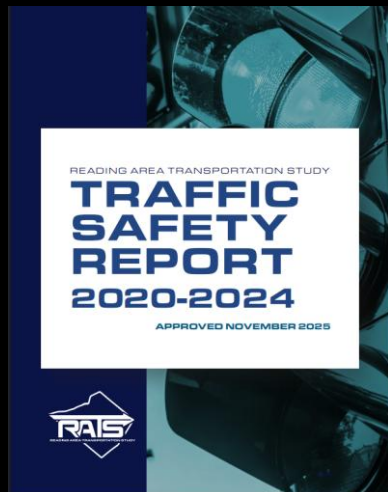
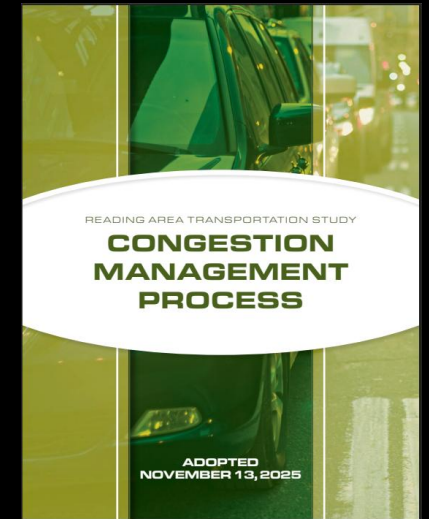
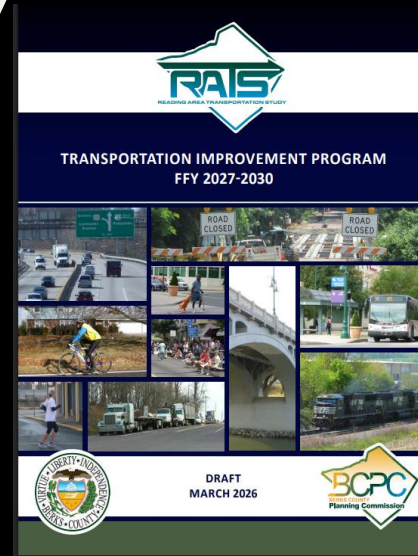
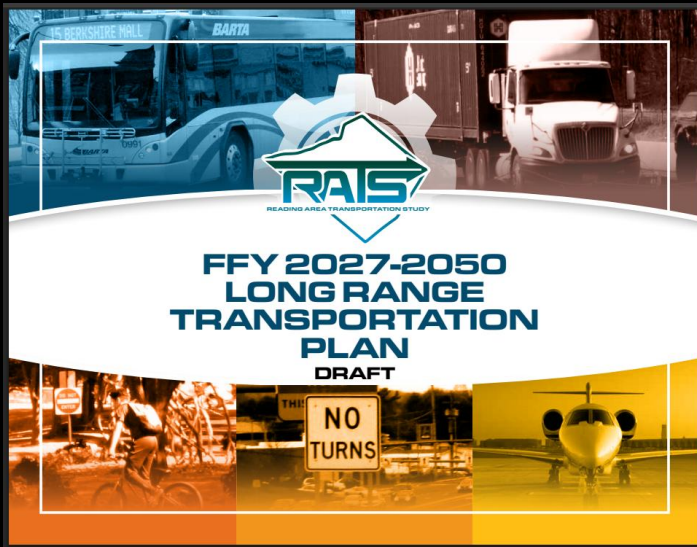
- Created by Berks, Chester and Montgomery Counties in 2022
- Restore passenger rail service between Reading and Philadelphia with a potential extension to New York City with anticipated Amtrak operator
- Currently participating in the FRA Intercity Rail Corridor Identification and Development Program
- Completed Phase 1 and awaiting approval to enter Phase 2



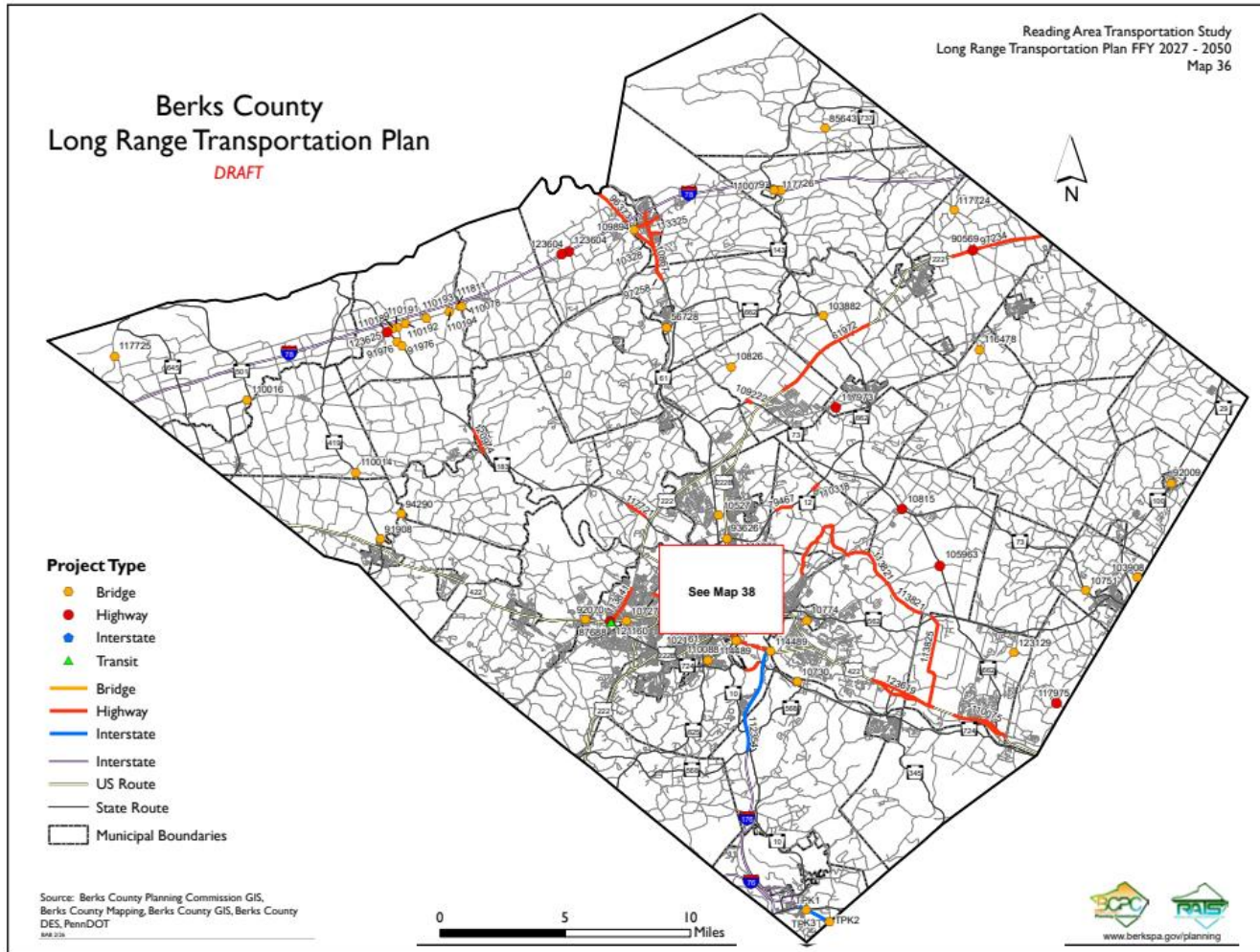


**Reading Area  
 Transportation Study**





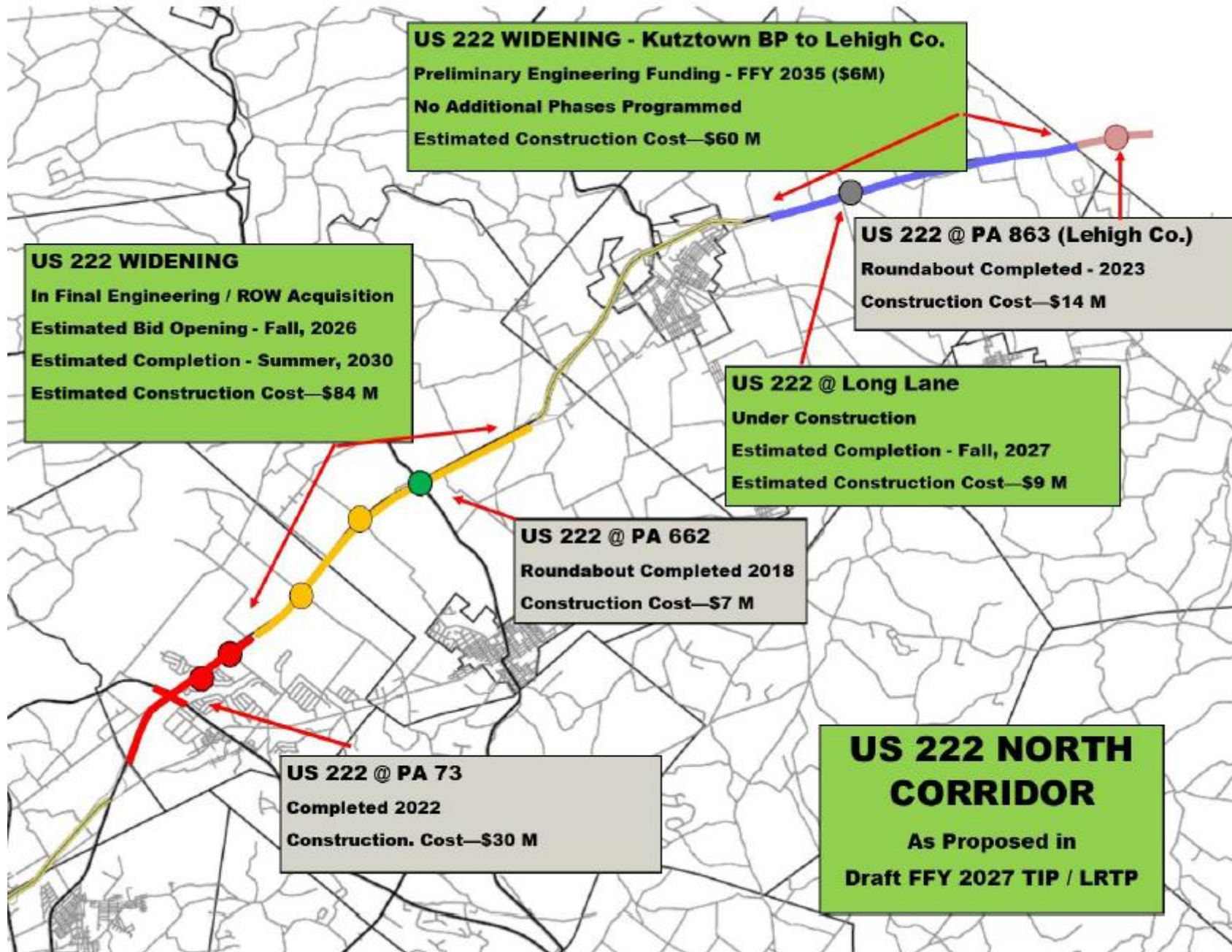
# FFY 2027-2050 Long Range Transportation Plan

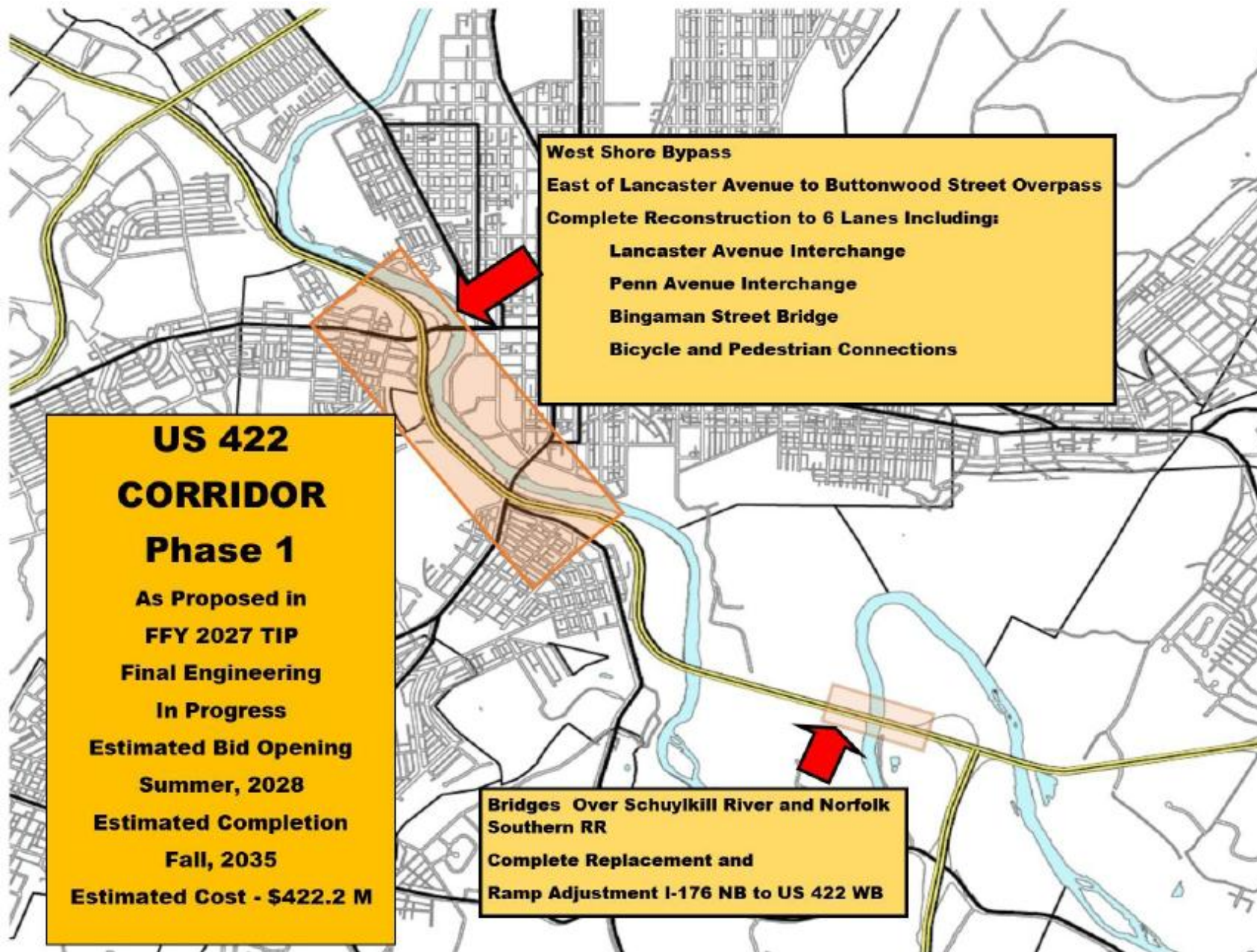


# LRTP GOALS

<b>Goal 1</b>	Keep travelers safe and secure for all modes of transportation.
<b>Goal 2</b>	Maintain and improve the existing multimodal transportation system and services within fiscal constraints.
<b>Goal 3</b>	Invest in projects that strengthen and enhance economic development and tourism opportunities.
<b>Goal 4</b>	Give travelers a variety of well-designed transportation choices that are in good condition.
<b>Goal 5</b>	Enhance the County transportation system to address environmental impacts.



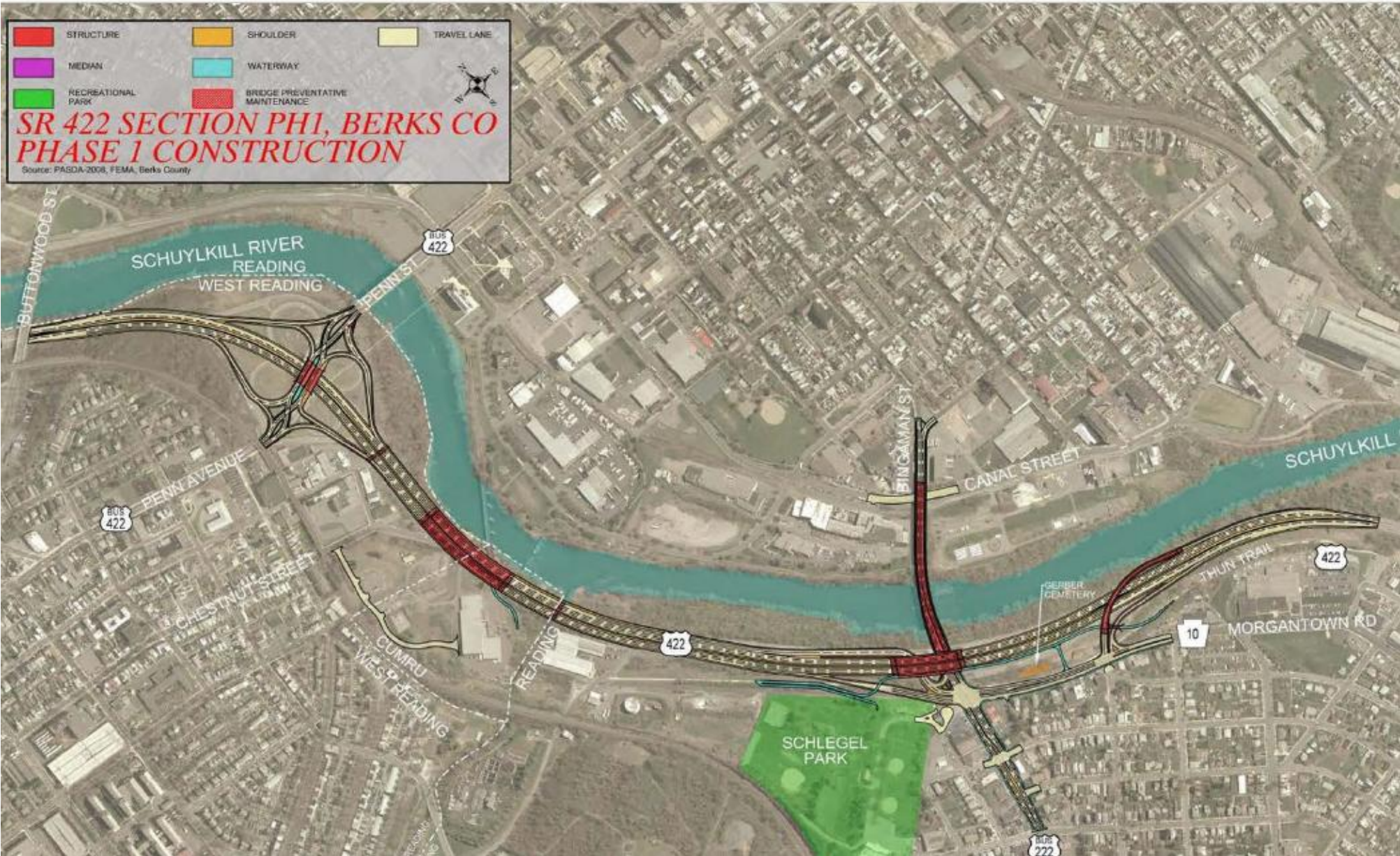




**West Shore Bypass**  
East of Lancaster Avenue to Buttonwood Street Overpass  
Complete Reconstruction to 6 Lanes Including:  
Lancaster Avenue Interchange  
Penn Avenue Interchange  
Bingaman Street Bridge  
Bicycle and Pedestrian Connections

**US 422  
CORRIDOR  
Phase 1**  
As Proposed in  
FFY 2027 TIP  
Final Engineering  
In Progress  
Estimated Bid Opening  
Summer, 2028  
Estimated Completion  
Fall, 2035  
Estimated Cost - \$422.2 M

**Bridges Over Schuylkill River and Norfolk  
Southern RR**  
Complete Replacement and  
Ramp Adjustment I-176 NB to US 422 WB



# Transportation Demand Management Partner

## COMMUTE PA

### February Totals

127  
New  
Members



7,268  
Recorded  
Trips



137,537  
Miles  
Reduced



\$99,714  
Money  
Saved



287,021  
Calories  
Burned



5,725  
Gallons of  
Gas Saved



## PennDOT Local Technical Assistance Program (LTAP)



### LTAP SERVICES OFFERED AT NO COST TO MUNICIPALITIES!!!

The Pennsylvania Local Technical Assistance Program (LTAP) shares transportation knowledge, improves road maintenance and safety skills, and puts research and new technology into practice at the local level through:

**Training:** Workshops are scheduled throughout the state and can be requested as a road show.

**Technical Assistance:** LTAP technical experts are available by phone, by email, and in person to help municipalities troubleshoot specific issues on their roadways.

**Newsletter:** LTAP distributes a quarterly newsletter, *Moving Forward*, which features the latest news and new practices and technologies.

**Technical Information Sheets:** Tech sheets provide useful, technical information on such topics as effective stop sign placement, how to use the MUTCD, paving roads, and other safety and maintenance issues related to local roads.

**Website:** LTAP's website, <https://gis.penndot.gov/ltap/>, is a valuable tool that provides up-to-date information on workshops, news items, LTAP Advisory Committee members, tech sheets, newsletters, and other resources.

### Berks County is offering the following courses locally for the 2026 calendar year:

**Wednesday, March 11, 2026 8:00AM – 12:00PM**

**Location: Berks County South Campus Multi-Purpose Room, 400 East Wyomissing Ave, Mohnton, PA 19540**

#### **Public Works Safety: Half Day, Roads Scholar I, RS Admin**

This course provides a basic understanding of common safety factors and practices associated with public works road maintenance operations. Specific operations discussed include trench excavation, crack sealing with hot asphalt, mowing and chain saw use, as well as winter maintenance. It provides an overview of why accidents happen and how to protect personnel through the use of personal protective equipment. Workplace awareness is stressed with emphasis on chemical safety, environmental hazards, and vehicle and equipment safety issues. The importance of having a formal safety program in place and how to establish an effective program is discussed.

**Intended Audience:** Individuals who are performing maintenance or construction activities for or on municipal roadways including: roadmasters, crew foremen, equipment operators, and laborers. Others who would benefit from this course include municipal managers and elected officials to understand the importance and for budgeting purposes.



## LINKS:

Berks County Planning Commission –

[www.berkspa.gov/departments/planning-commission](http://www.berkspa.gov/departments/planning-commission)

Reading Area Transportation Study (Reading MPO) –

[www.berkspa.gov/departments/planning-commission/transportation-reading-mpo](http://www.berkspa.gov/departments/planning-commission/transportation-reading-mpo)

Draft FFY 2027-2050 Long Range Transportation Plan –

[www.berkspa.gov/departments/planning-commission/transportation-reading-mpo/plans-and-programs/draft-plan-elements](http://www.berkspa.gov/departments/planning-commission/transportation-reading-mpo/plans-and-programs/draft-plan-elements)

Draft FFY 2027- 2030 Transportation Improvement Program –

[www.berkspa.gov/departments/planning-commission/transportation-reading-mpo/plans-and-programs/ffy-2027-2030-transportation-improvement-program](http://www.berkspa.gov/departments/planning-commission/transportation-reading-mpo/plans-and-programs/ffy-2027-2030-transportation-improvement-program)

2025 Congestion Management Process –

<https://www.berkspa.gov/departments/planning-commission/transportation-reading-mpo/plans-and-programs/congestion-management-process>

RATS 2020-2024 Traffic Safety Report / RATS Pavement and Bridge Condition Report 2020-2024 –

<https://www.berkspa.gov/departments/planning-commission/transportation-reading-mpo/plans-and-programs/rats-system-reports>

Eastern Pennsylvania Freight Infrastructure Plan –

<https://www.berkspa.gov/departments/planning-commission/transportation-reading-mpo/plans-and-programs/eastern-pennsylvania-freight-infrastructure-plan>

# Thank you



Alan Piper

Senior Transportation Planner

Berks County Planning Commission

Reading MPO

[apiper@berkpa.gov](mailto:apiper@berkpa.gov)

(610) 478-6300

[www.berkspa.gov/planning](http://www.berkspa.gov/planning)