



<https://doverkentmpo.delaware.gov/>

ITE Mid-Colonial District (MCDITE)

April 16, 2026

# Small MPO, Big Impact – Focus on Central DE

*Marilyn J. Smith – Executive Director*

*marilyn.smith@doverkentmpo.org*

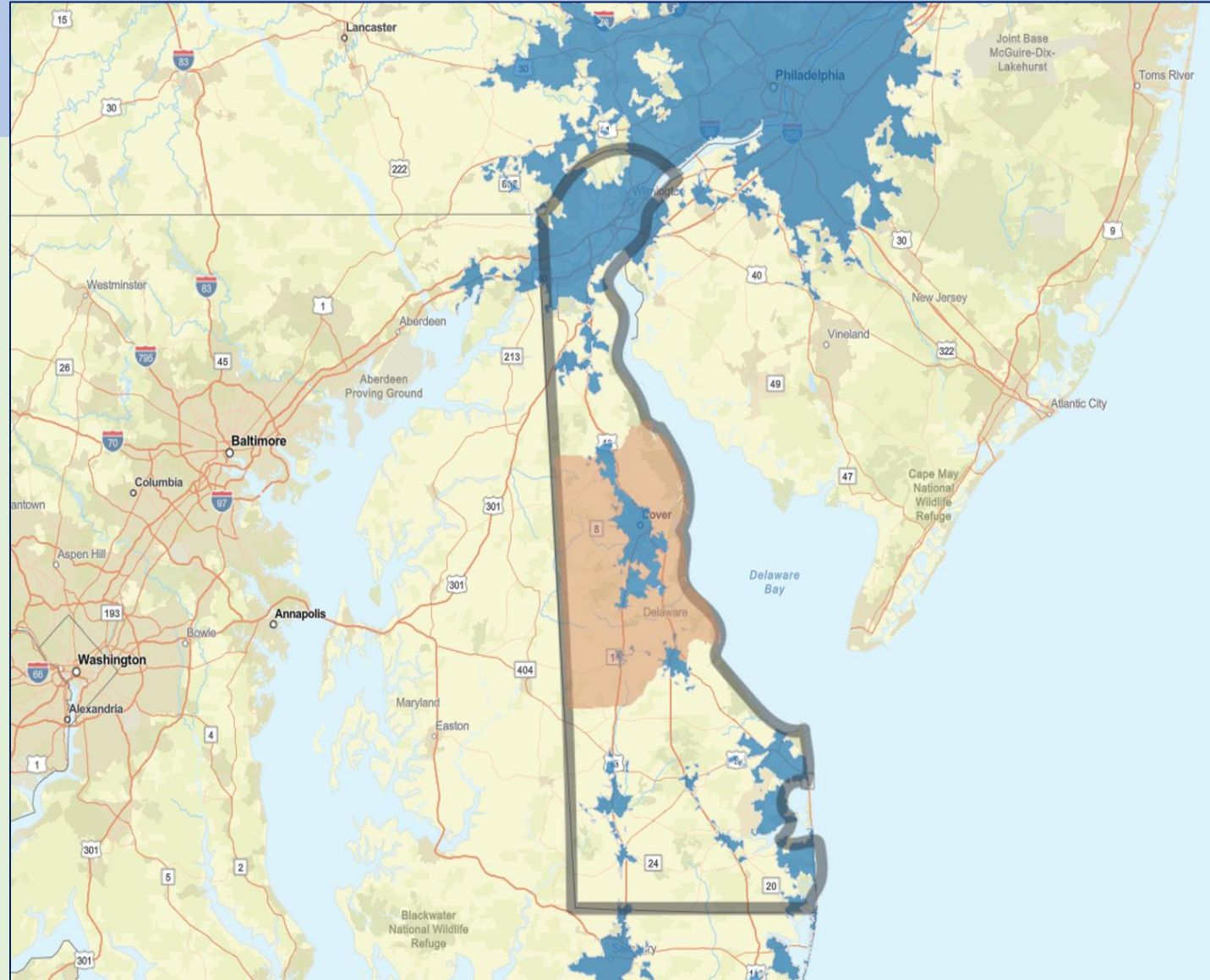
# What is an MPO?

## (Metropolitan Planning Organization)

- MPOs are federally mandated and mostly federally funded (80% federal, 20% state and local)
- All urban areas over 50,000 in population are required to have an MPO **if federal funds will be spent on transportation improvements**
- Transportation planning and policy-making organizations
  - We're all about transportation infrastructure planning
  - Everything that needs to be in place to get you from point A to point B, regardless of which mode of transportation you're using
  - Which projects are coming up that need federal funding
- Coordinate with DeIDOT, DART and municipalities to **prioritize projects and set spending levels for federal funds designated for transportation projects**
- Work with partners on issues such as air quality, environmental justice, safety, economic growth, public mobility
- **Focused on public input and participation**
- **Dover Kent MPO is your transportation planning partner**

# Dela – where????

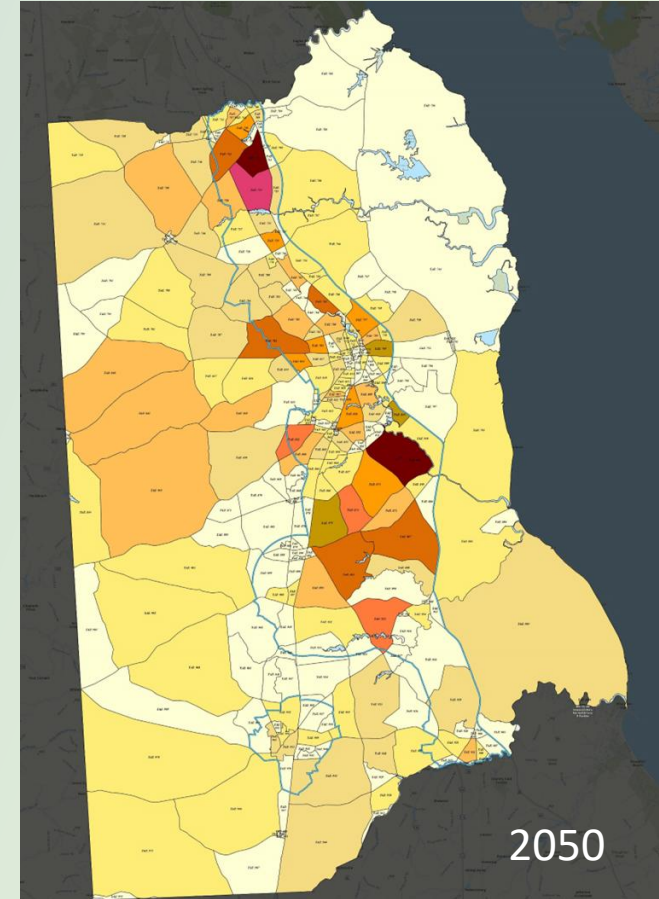
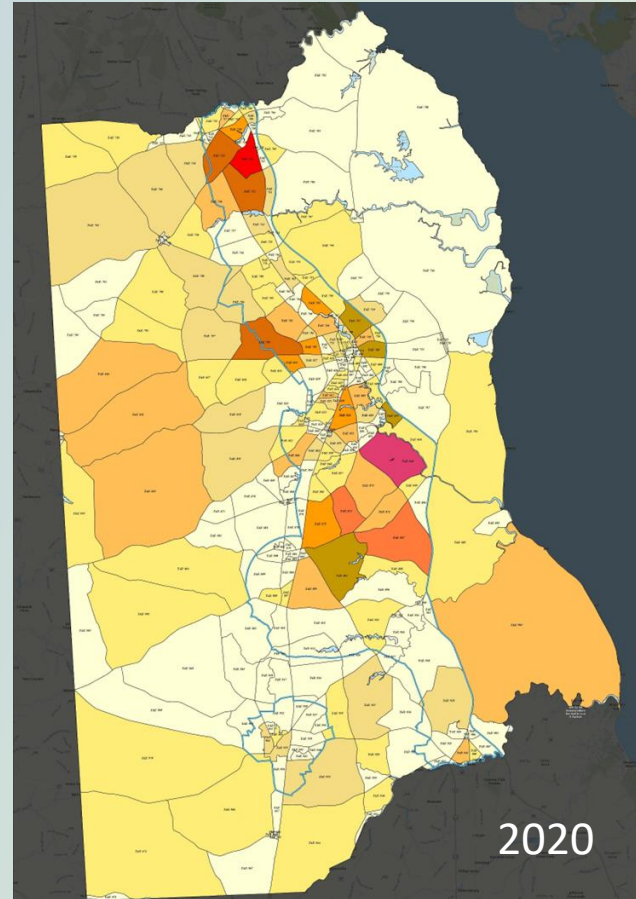
- State of Neighbors
- Lowest lying state, highest percentage of infrastructure assets below sea level
- DelDOT owns and maintains over 90% of the roads, bridges, etc. - Counties and municipalities have little to no road maintenance responsibilities
- Only two MPOs, both operate independently
- No MPO for the largest portion of the state (Sussex County)



# Dover Kent County MPO

- Dover Kent MPO has existed since 1992
- Planning and programming in Kent County – 586 square miles, 3 cities and 17 towns
- Serve both urban and rural population
- Population – 181,497, 12% increase since 2010, 44% increase since 2000
- Projected population increase by 2050 is 16.3%

Metric	2020	2030	2040	2050	% increase
Population	181,497	196,709	205,139	211,150	16.3%
Households	68,224	77,683	82,151	84,615	24.0%
Employment	66,246	74,416	77,965	81,136	22.5%



Source: US Census Bureau – 2020 Census (adjusted to remove Group Quarters Population)  
 Source: Delaware Population Consortium Projections Series – 10/26/23 (adjusted to remove Group Quarters Population)

# Unique to Kent County

- Amish Community

- Approximate population in 2025 = 2,045
- 16.9% increase since 2020
- Settlement is listed as 25<sup>th</sup> among largest designated Amish Settlements in the US

*(Amish Population Profile, 2024 – Elizabethtown College, Young Center for Anabaptist and Pietist Studies, August 19, 2024)*



- Dover Air Force Base

- Home to the 436<sup>th</sup> Air Wing, the busiest and largest freight terminal in the DoD
- Approximately 10,000 Airmen, joint service members, civilians and families
- Air Force Reserve's 512th Airlift Wing, Air Force Mortuary Affairs Operations (AFMAO), Armed Forces Medical Examiner System (AFMES), and Joint Personal Effects Depot (JPED)



# Innovations 2050 – MTP (long-range plan)

- Vision - *“The future transportation system in the Dover Kent County Metropolitan region is safe, resilient, and sustainable, supports economic development, allows easy access and mobility for all people and goods to reach their destinations, and serves desired growth patterns in a manner that is fair and just to all people and respectful of community character and our natural environment.”*

- **What’s in the Plan?**

- Long Range Plan (25-year Horizon) – updated every 4 years
- Our Vision for Transportation Services in Kent County
- Goals and Objectives: Near- and Long-Term
- Growth and Travel Demand Forecast
- Operations and Management Plan
- Financing Plan for Implementation

- **Primary Themes**

- Enhanced Mobility – Network Continuity
- Inter-Jurisdictional Coordination and Concurrency
- Economic Vitality
- Fundamental Fairness - Social Equity
- Resiliency and Sustainability
- User Experience

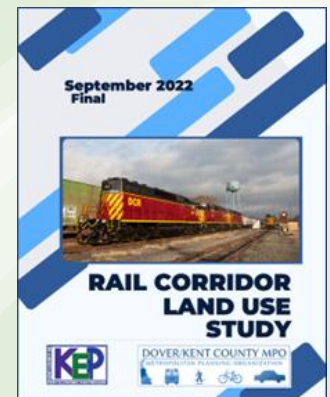
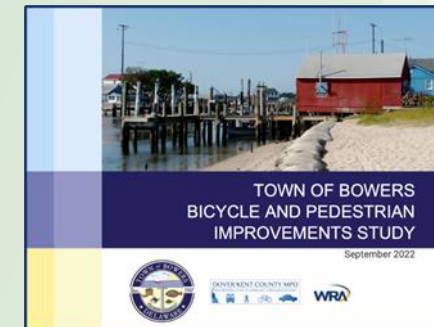
<https://doverkentmpo.delaware.gov/innovations2050/>

**What's Unique About  
Dover Kent MPO???**

# Recently Completed Studies

- Bay Road Path & Walking Trail Connections (Dover)
- Camden Sidewalk Network Gap (Camden)
- Cheswold Railroad Crossing Improvements (Cheswold)
- Cheswold US13 Pedestrian Safety & Connectivity (Cheswold)
- DAFB Compatible Use Study Implementation (DeIDOT)
- Dover High School Walk Zone Sidewalk Study
- Dover Municipal Freight Plan (DeIDOT)
- Dover SR9 / SR1 Improvements (DeIDOT)
- Dover State Street / South Dover Elementary School Intersection Improvements (Dover)
- Downtown Dover Pathways, Expanded Modes/Amenities & Loockerman Streetscape (DDP)
- East/West Freight Routes Phase 2 (KEP)
- Kent County Airports Inventory (KEP)
- Kent County Rail Corridor Land Use Study (KEP)
- Little Creek Pedestrian Improvements (Little Creek)
- McKee / Saulsbury Road (Dover)
- Milford / Slaughter Beach Shared Use Path
- N. Rehoboth Blvd/N. Walnut St Corridor (Milford)
- NW & NE 10th St/N. Church St/N. Rehoboth Boulevard/ N. Walnut Street Intersection Study (Milford)
- Rail Corridor Land Use (KEP)
- Smyrna-Clayton Boulevard Study (Smyrna)
- South Central Kent County Circulation & Sufficiency (DeIDOT)
- South Dover Elementary School Traffic Safety (Dover)
- Town of Bowers Bicycle and Pedestrian Improvements (Bowers)
- Trap Shooters Interchange Study (DeIDOT)
- Truck Parking Amenities Study (KEP)
- US13 North Corridor Plan (Dover)
- US13 Sidewalk Gap Identification Study (Dover)
- Wheatley's Pond Rd & School Lane Intersection Improvements (Clayton)

<https://doverkentmpo.delaware.gov/projects/>



# Current Projects

- Airport Road Milford Corridor Improvement Study
- Clayton to Marydel Rail Trail
- Diamond State Line Passenger Rail (supporting DTC)
- Expanded Rail Corridor Land Use (southern New Castle & Sussex Counties)
- Hickory Ridge Road Smyrna Improvements
- Milford US113 Corridor
- School District Walk Zone Inventory & Analysis
- Statewide Freight Plan Update (supporting DelDOT)
- Statewide Rail Plan Update (supporting DelDOT)
- Wheatley's Pond / Underwoods Corner Road Clayton Intersection



<https://doverkentmpo.delaware.gov/current-study-pages/>

# In-house Projects – MPO Team



**Marilyn**  
Executive Director  
**25% = 465 hours**



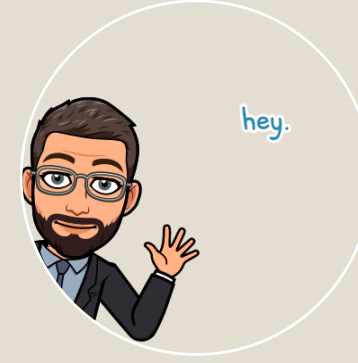
**Mike P**  
Principal Planner  
**75% = 1131 hours**



**Malcolm**  
Transportation  
Planner  
**75% = 1395 hours**



**Helen**  
Outreach  
Manager  
**35% = 651 hours**



**Mike W**  
GIS Planner  
**75% = 1131 hours**



**Michelle**  
Executive Assistant  
**30% = 558 hours**

\* Focus on planning, no engineering or detailed design work

FTE = 1860 hours, PTE = 1508 hours, intern = 500 hours

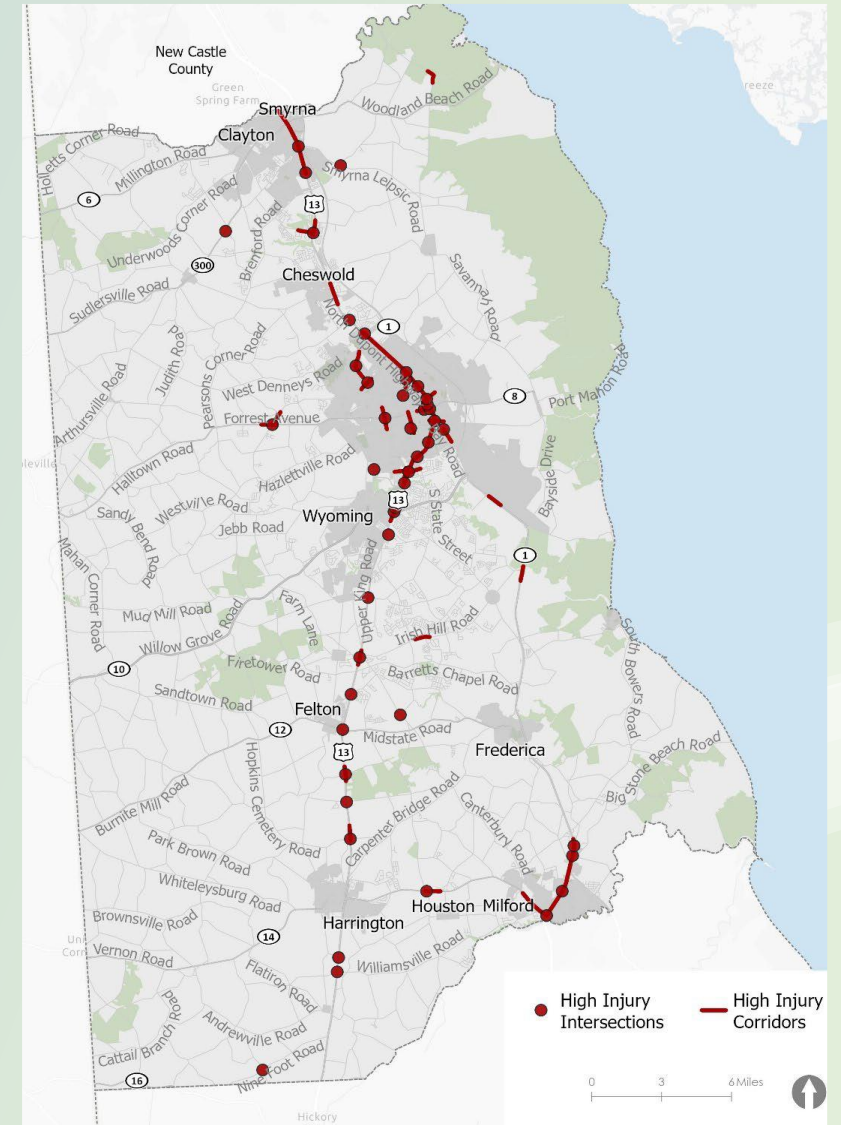
**Total available hours for in-house projects = 5331 hours** *(plus intern when available)*



# Kent County Comprehensive Safety Action Plan (2025)

- SS4A was established by the IJA to identify and fund initiatives to prevent roadway fatalities and serious injuries
- First time the MPO received a direct competitive federal grant
- County-wide project
- Identify a High Injury Network (highest frequency & severity of crashes)
- Toolkit of Proven Safety Countermeasures
- Can be used to apply for SS4A implementation funding
- MPO was recently awarded \$400,000 for supplemental planning for the 6.1-mile US 13 corridor within Dover city limits

<https://doverkentmpo.delaware.gov/files/2025/06/Kent-County-Safety-Action-Plan-FINAL-June-2025.pdf>



# MPO Parklet Pilot Program

- Dover Kent MPO received a STIC (State Transportation Innovation Council) grant to develop and implement a Parklet Pilot Program in Kent County
- Parklets are public seating platforms that convert curbside parking spaces into vibrant community spaces
- Introduce the concept to municipal leaders and residents
- Acquired a mobile parklet
- Created a Parklet Mini Grant program
- Developed a Parklet How-To Guide
- Provide Technical Assistance

## How To Create, Design, Implement and Enjoy A Parklet



February 2022

# Where have you seen the MPO parklet?

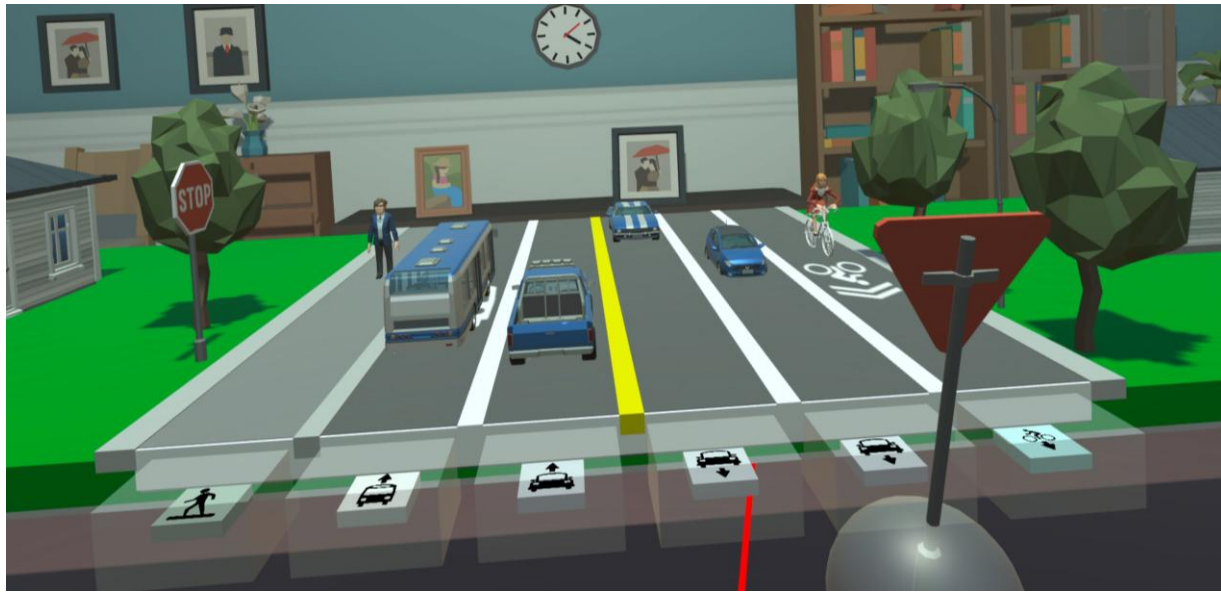


- **What Is A Parklet?**  
[https://www.youtube.com/watch?v=TW5txUKjKRI&ab\\_channel=Dover%2FKentCountyMPO](https://www.youtube.com/watch?v=TW5txUKjKRI&ab_channel=Dover%2FKentCountyMPO)
- **Parklet Pilot Program Presentation Slides**  
<https://doverkentmpo.delaware.gov/files/2021/10/Parklet-pilot-program-1.pdf>
- **Parklet How-to Guide**  
<https://doverkentmpo.delaware.gov/files/2022/03/how-to-guide-final-1.pdf>
- **Parklet Mini Grant Application**  
<https://doverkentmpo.delaware.gov/files/2022/04/mini-grant-guidance-application-v2.pdf>

# MPO Virtual Experience

- Dover Kent MPO received a STIC (State Transportation Innovation Council) grant to develop and implement the MPO Virtual Reality (VR) Experience
- Why VR? Middle-school and high-school students were not responding to the analog version of Think Like A Planner
- Leverage virtual reality technology to enrich the public's experience, education, and awareness of the MPO
- Increase public awareness and understanding of transportation planning and the role it plays in ensuring safe and efficient transportation for all
- Create simulated safety problems for players to navigate, test their knowledge and assess their performance
- Demonstrate how the Dover Kent MPO fits into that scheme
- Serve as a tool to engage with students and job seekers to promote transportation planning as a career choice





# What's Unique About Dover Kent MPO???

- Creativity
- Responsiveness
- Find ways to get to “yes”
- Understand local communities
- Connected to stakeholders
- Partnership with DelDOT and other State and Local agencies
- Small but impactful

Thank you for your interest

Questions?

Connect with Us - #doverkentmpo

