



MID-COLONIAL DISTRICT

2026 ANNUAL MEETING

APRIL 15 -17 | LANCASTER, PA



Interchange Demolition and Redesign for a Modern Turnpike

Steve Brousse, P.E.

Senior Engineer Project Manager

sbrousse@paturnpike.com

Thursday April 16th

(1:30-3:00)

Marriott at Penn Square – Lancaster, PA



Agenda

PART 1 – History of Tolling

PART 2 – Toll Plaza Removal

**PART 3 – The Day in the Life of a
Turnpike Project Manager**

THE HISTORY OF TOLLING ON THE PA TURNPIKE



- First section opened in 1940
- Currently **564 miles long**
- **50 million** vehicles travel it annually
- EZ-Pass launched in 2000



1940

2000

2024

2050 ?

Opening

EZ-Pass
Introduced

Open Road
Tolling

Future Vision
GPS Satellite
Tolling



First Toll Plaza

Coin-operated toll booths with cash payments—cars paid 1 cent per mile at the first toll plaza near Irwin, PA.



Electronic Toll Collection

EZ-Pass electronic toll collection system launched—vehicles can pass through without stopping



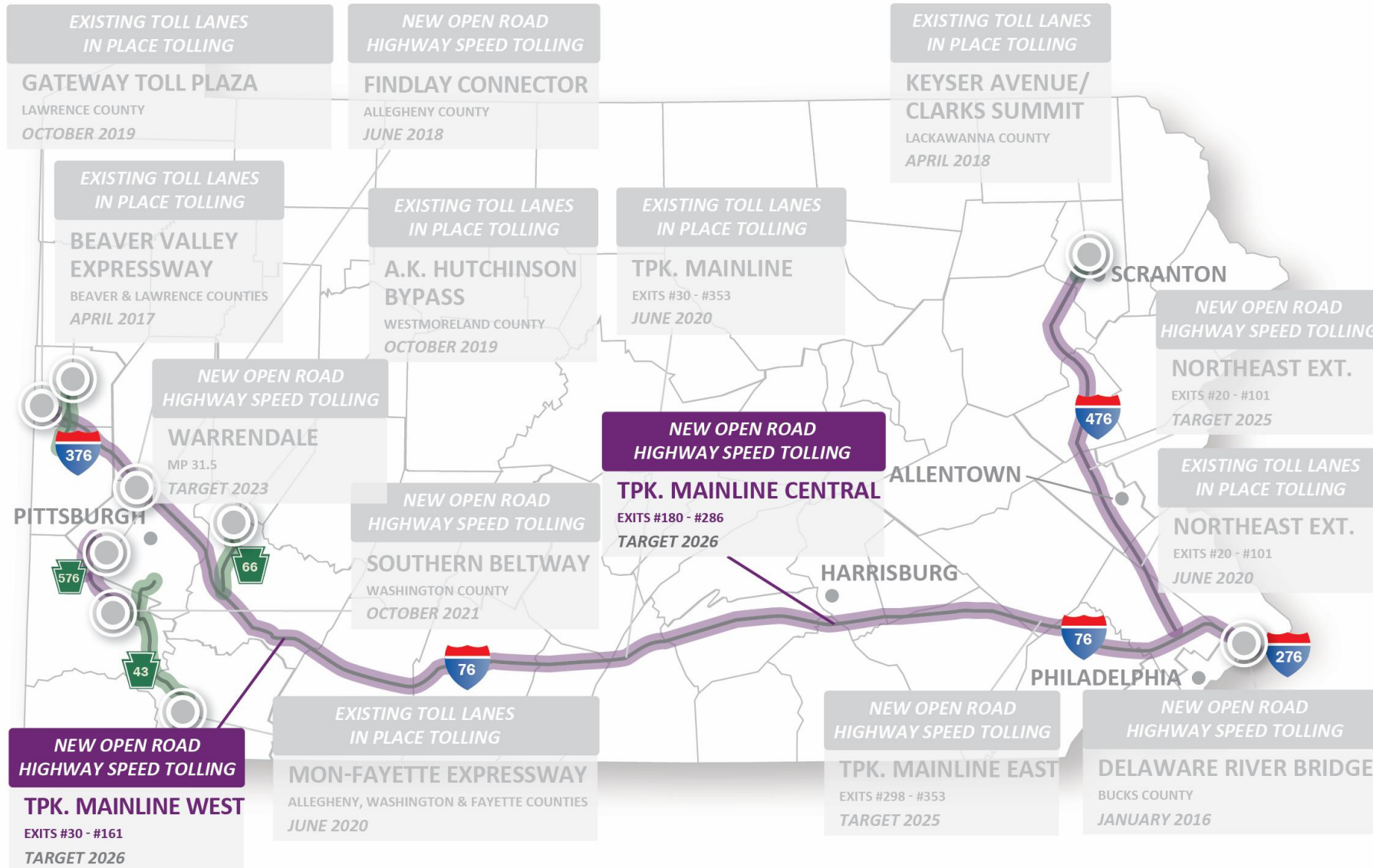
Cashless Tolling

PA Turnpike went cashless, tolls are collected via E-ZPass or license plate cameras.



Automated tolling via satellite and GPS—tolls are collected using real-time vehicle tracking and technology.

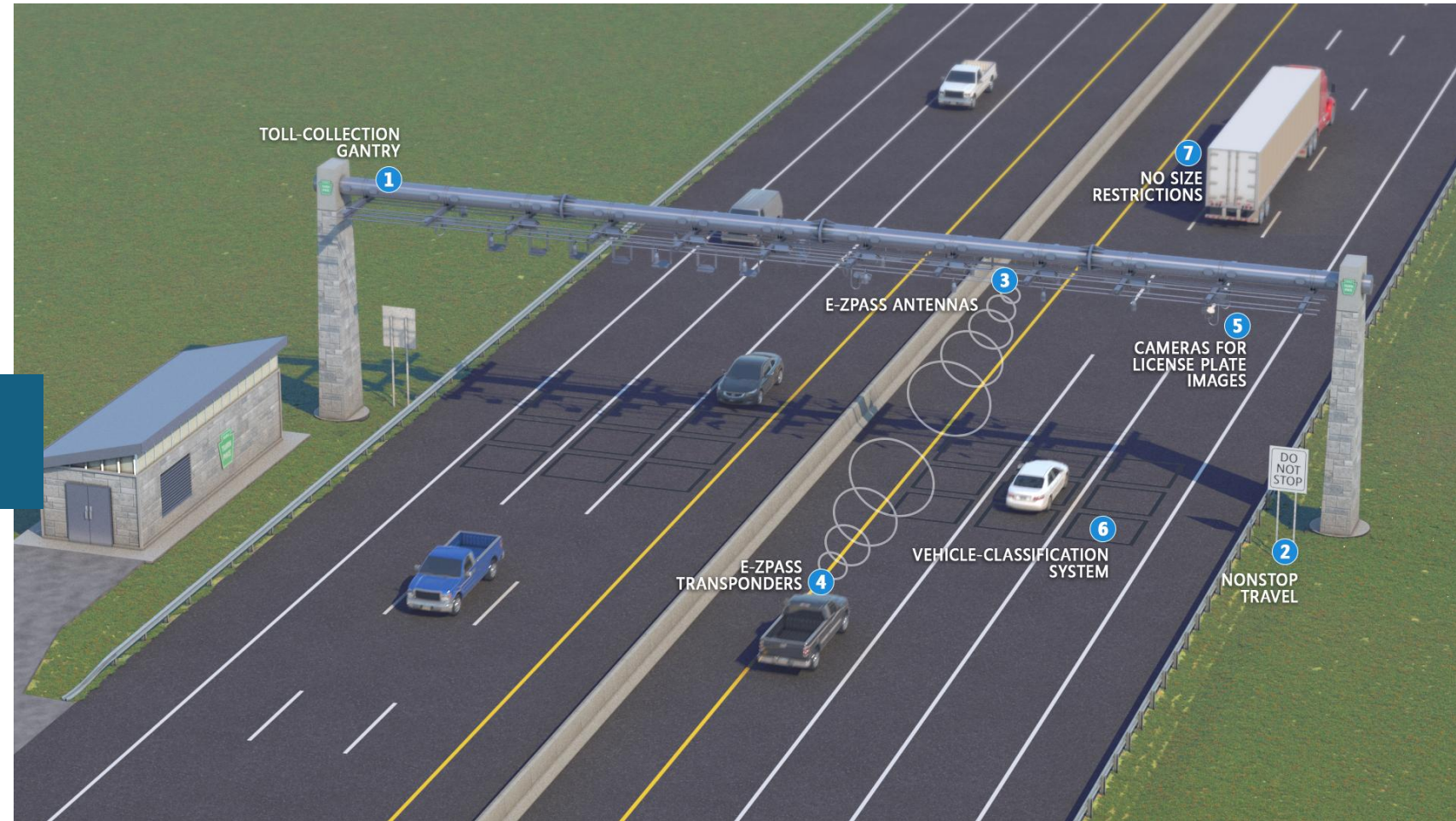
Transition to Open Road Tolling

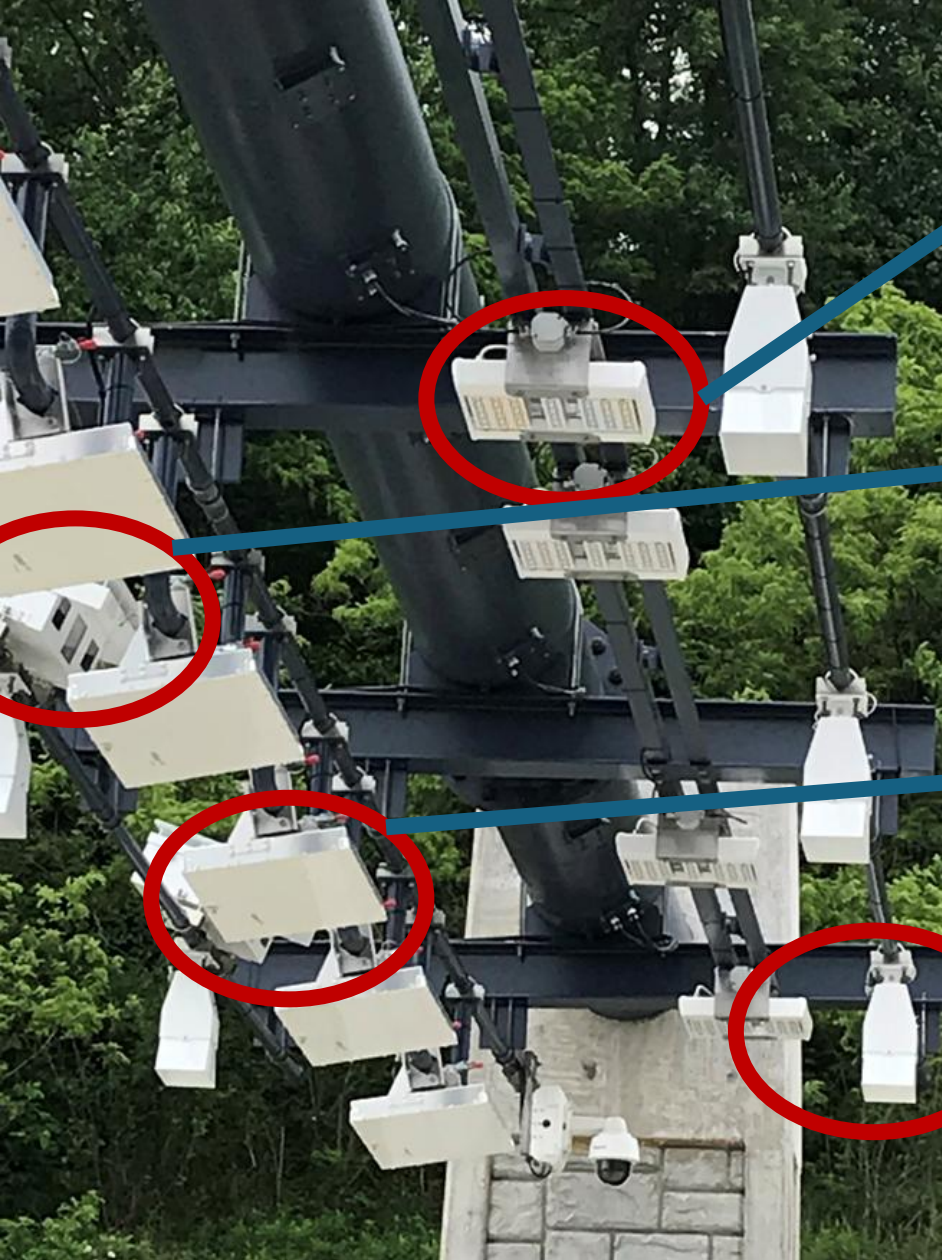


How does **All Electronic Tolling** work?

Open Road AET

Open road tolling (ORT) is the cashless, free flowing mode of collecting tolls at highway speeds without the use of traditional toll plazas.





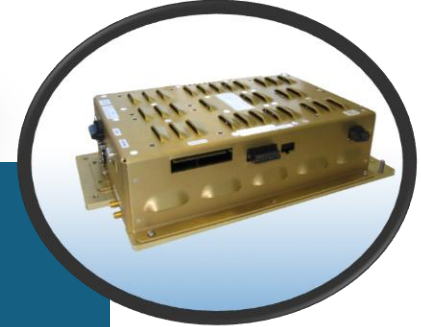
LED Transportation
Luminaire



High-Resolution
Camera



RFID - Radio Frequency
Identification



OPUS - Optical Profile
Unifying System





Toll Plaza Removal

The Big Switch

- January 5th 2025, the Turnpike switched to Open Road Tolling – Eastern Section
- January 3rd 2027, the Turnpike switched to Open Road Tolling – Central/Western

The Benefit to ORT

- Easy Expansion with new access points
 - SR 130 – between Pittsburgh and Irwin out west
 - Lafayette Street – Near Norristown
 - Updates to existing interchanges (Breezewood/Quakertown)

The Benefit to removing the toll booth

- Maintenance Costs Savings
- Environmental
- Safety Improvements
- Operational Efficiency
- Land Reuse & Right-of-Way

Toll
Plaza
Removal



PA Turnpike Open Road Tolling Conversion
Demolition Phase



Worker

1



PART 3 – The Day in the Life of a Turnpike Project Manager

Design Group



Kevin Scheurich
(60 employees)



Brad Heigel
Chief Engineer
(250 employees)

Construction



Matt Burd
(100 employees)

Facilities



Keith Jack
(90 employees)

- 7 Managing Groups**
- Geo-tech
 - Total Recon
 - Environmental
 - Roadway
 - Bridge
 - Planning and Design Services
 - Facilities

- Job Titles**
- Chief Engineer
 - Assistant Chief Engineer
 - Manager
 - Senior Project Manager
 - Engineer project Manager 3
 - Engineer Project Manager 2
 - Engineer Project Manager 1
 - Engineer-in-Training



What Project Managers Do

- Manage multiple projects with various consultant teams
- Ensure projects are clean, on-time, on-budget, and permit-approved
- Coordinate across internal experts and external partners, no project is done alone
- Lead monthly design reviews, submissions, and ongoing evaluations
- Stay with the project from design through construction completion

Team Approach

- Work with internal liaisons and subject matter experts
- Coordinate between multiple departments and outside stakeholders

Workforce Development (WFD)

- Growing team of younger project managers
- Ongoing weekly training (1–2 hours) led by field experts
- Focused on continuous learning and development

Project management isn't about having all the answers, it's about knowing where to find them.



Know the System

- Understand DOM & DCG standards
- Know your liaisons and use your PM for coordination



Protect the Project

- Stay aligned with the Capital Plan & budget
- Be accurate with invoices
- When unsure → ask before submitting



Communicate Early & Often

- Ask questions early
- Provide weekly updates & action tracking



Be Cost-Conscious

- We focus on project cost
- Bring engineering solutions to reduce cost



Strong SOIs Matter

- Answer all questions within questions
- Stay focused – don't overreach beyond scope



What Did I Miss? 😊

Any Questions?

Thank you to MASITE – Mid-Atalantic for for the opportunity

